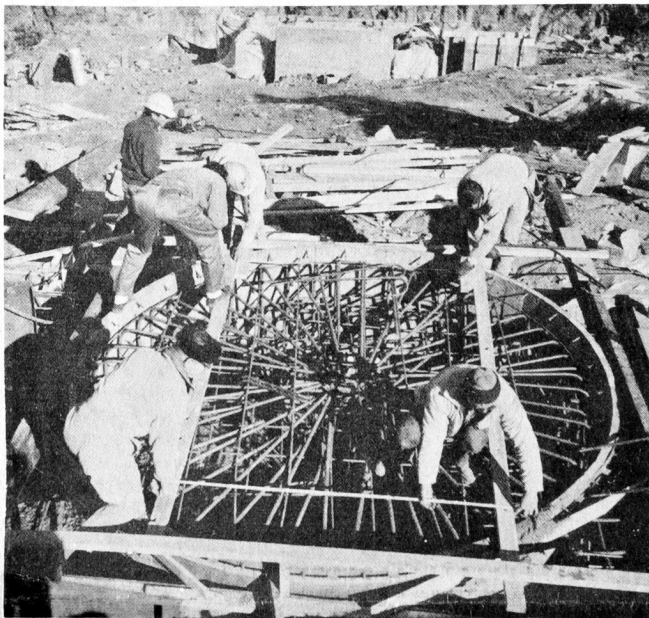
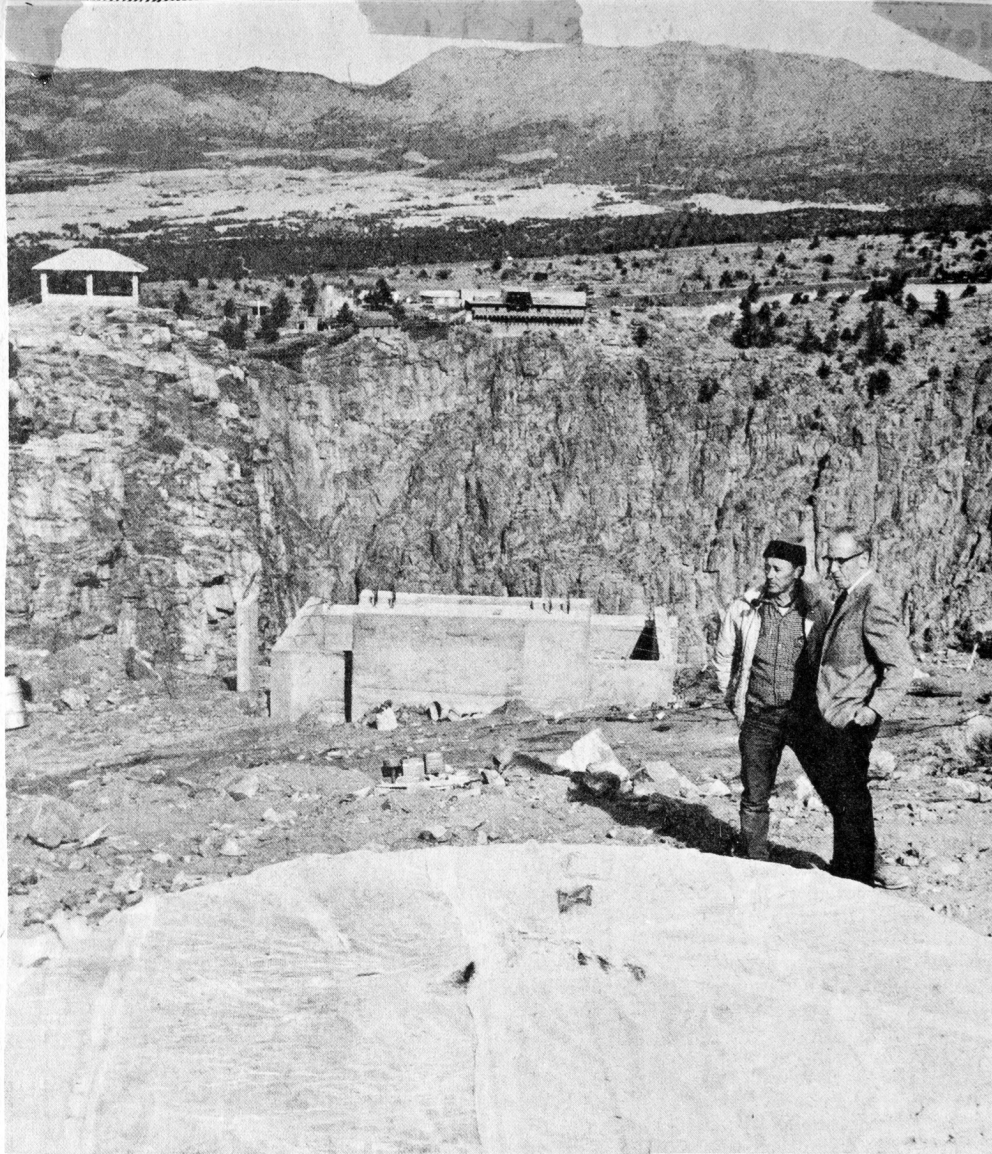


CANON CITY DAILY RECORD

Canon City, Colorado Friday, January 17, 1969

Vol. LXIII, No. 15



B-015-013-0014

The Royal Gorge Aerial Tramway, to be a spectacular addition to the attractions at the Gorge, will have its north rim terminal station here. Joe Chapman, right Royal Gorge Co. president, looks over construction progress with Bob Lesage, engineer for the Heron Construction Co., general contractors. In foreground of upper picture, canvas covers the 15,000 pound track cable anchor. It will be counter-balanced on the south rim by two 30-ton weights. The 2,200-foot cable span will carry the 35-passenger gondola. Lower picture shows some of the detail of the track cable anchor. Tram is due for completion in early summer. Arrow in top center of upper photo shows terminal site on south rim.