

City of Pittsburgh Preliminary War Monument Inventory



Version 4.0



PITTSBURGH
A MOST LIVABLE CITY

Note: This document includes placeholder images and is considered to be a preliminary inventory until such time as City staff are able to fully confirm, assess and document actual objects in the field.

Preliminary War Monument Inventory

Introduction

In Summer 2011, with the valuable input of the citizens of Pittsburgh and the City Department of Public Works, City Planning launched a project to create a complete inventory for war monuments and memorials within the City of Pittsburgh that reside upon City property and/or are the responsibility of the City. At this time, City Planning has established an initial inventory of over 120 monuments and memorials within the City.

Included within this slideshow, you will find images, maps and other information on monuments, memorials and artworks related to American wars and conflicts that are located outdoors within the City of Pittsburgh. The intent of this inventory is to capture those objects that belong to or are connected to the City of Pittsburgh, although there are others included herein that may be technically located on private property.

You will find that the current preliminary inventory is categorized by city neighborhood. Once these pieces have been more thoroughly assessed and documented, this inventory database will be re-presented online and available in printable copy for citizens ease of use.





**City of Pittsburgh
Neighborhoods**

City of Pittsburgh Neighborhoods

Allegheny Hills

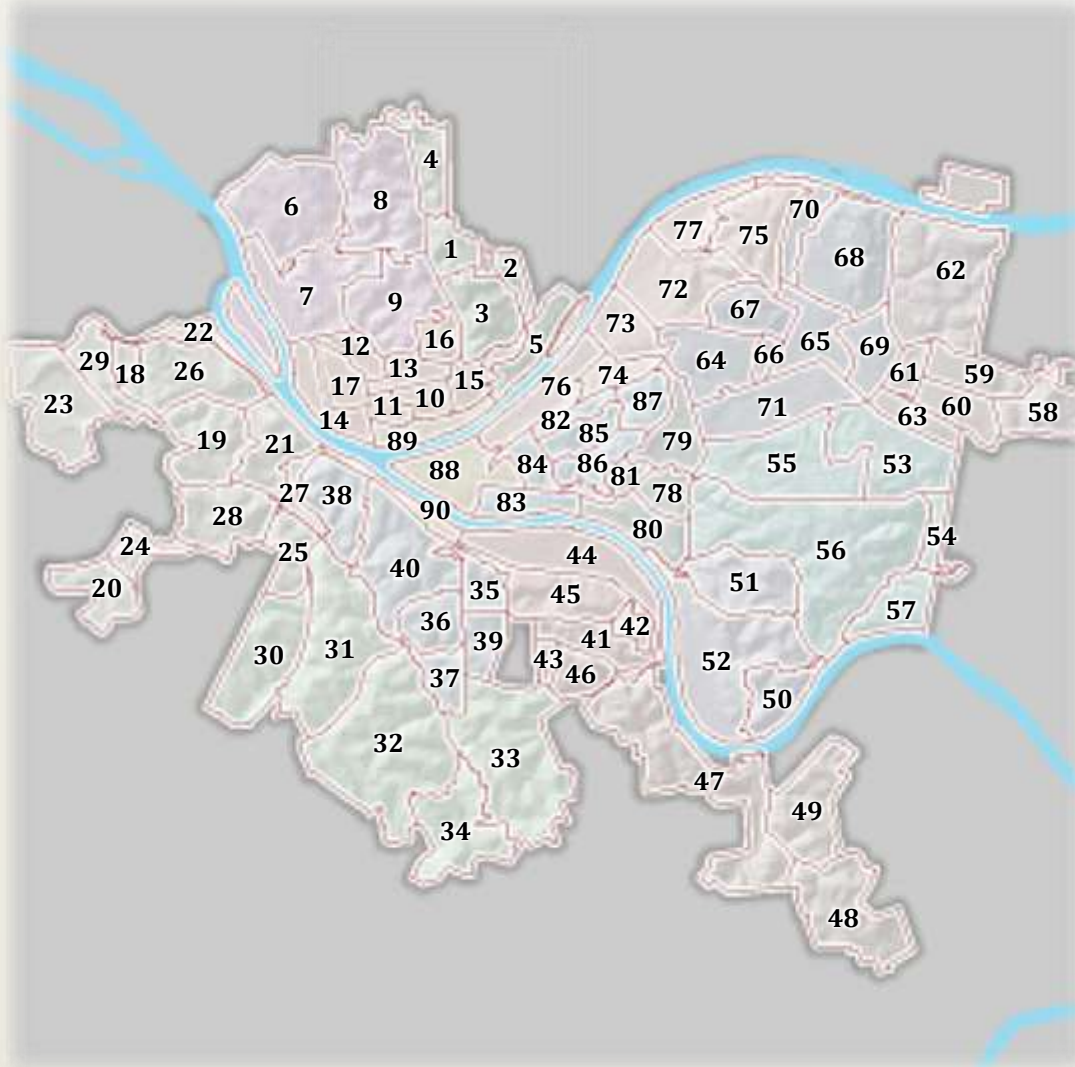
1. Northview Heights
2. Spring Garden
3. Spring Hill-City View
4. Summer Hill
5. Troy Hill

Upper Northside

6. Brighton Heights
7. Marshall-Shadeland
8. Perry North
9. Perry South

Lower Northside

10. Allegheny Center
11. Allegheny West
12. California-Kirkbride
13. Central Northside
14. Chateau



15. East Allegheny
16. Fineview
17. Manchester

West Pittsburgh

18. Chartiers City
19. Crafton Heights
20. East Carnegie
21. Elliott
22. Esplen
23. Fairywood
24. Oakwood
25. Ridgemont
26. Sheraden
27. West End
28. Westwood
29. Windgap

South Pittsburgh

30. Banksville
31. Beechview
32. Brookline
33. Carrick
34. Overbrook

Mt. Washington/Hilltop West

35. Allentown
36. Beltzhoover
37. Bon Air
38. Duquesne Heights
39. Knoxville
40. Mount Washington

Southside/Hilltop East

41. Arlington
42. Arlington Heights
43. Mt. Oliver
44. Southside Flats
45. Southside Slopes
46. St. Clair

Thirty-first Ward

47. Hays
48. Lincoln Place
49. New Homestead

Monongahela River Valley

50. Glen Hazel
51. Greenfield
52. Hazelwood

Lower East End

53. Point Breeze
54. Regent Square
55. Squirrel Hill North
56. Squirrel Hill South
57. Swisshelm Park

Northeast Pittsburgh

58. East Hills
59. Homewood North
60. Homewood South
61. Homewood West
62. Lincoln-Lemington-Belmar
63. Point Breeze North

Upper East End

64. Bloomfield
65. East Liberty
66. Friendship
67. Garfield
68. Highland Park
69. Larimer
70. Morningside
71. Shadyside

Allegheny River Valley

72. Central Lawrenceville
73. Lower Lawrenceville
74. Polish Hill
75. Stanton Heights
76. Strip District
77. Upper Lawrenceville

Oakland

78. Central Oakland
79. North Oakland
80. South Oakland
81. West Oakland

Hill District & Uptown

82. Bedford Dwellings
83. Bluff
84. Crawford-Roberts
85. Middle Hill
86. Terrace Village
87. Upper Hill

Downtown Pittsburgh

88. Central Business District
89. North Shore
90. South Shore



War Monuments on City of Pittsburgh Property



PITTSBURGH
A MOST LIVABLE CITY

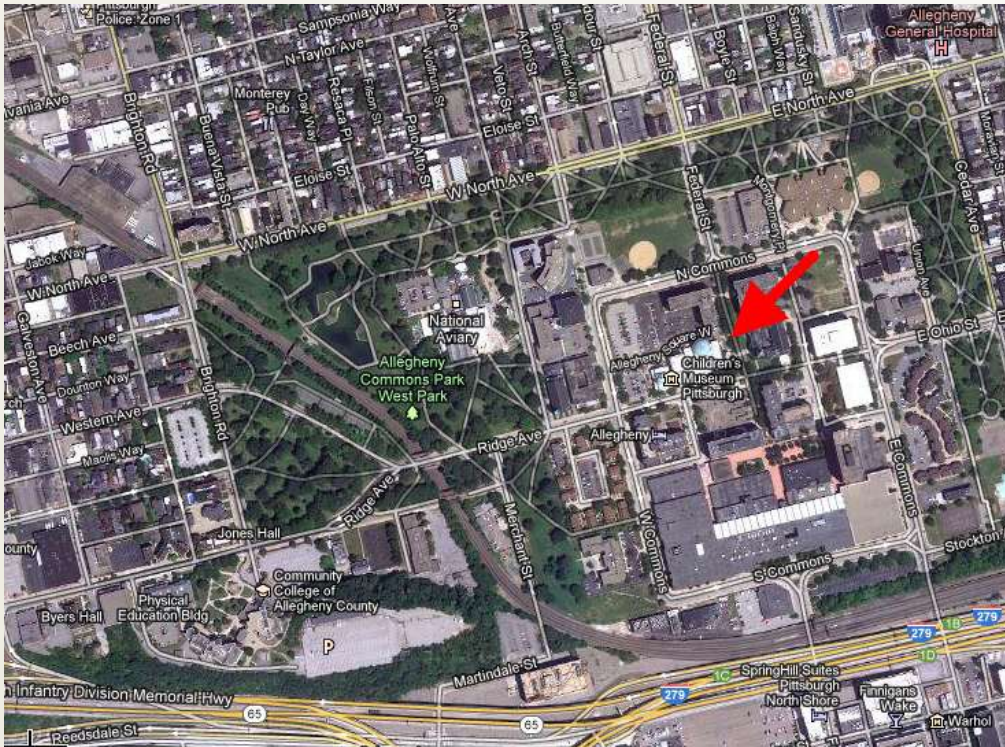
Colonel James Anderson Monument

LOCATION: Located on the Northeast side of the Children's Museum of Pittsburgh, across from the entrance to the former Carnegie Library of Pittsburgh, Allegheny Branch

YEAR: 1904

ARTIST: Daniel Chester French (1850 – 1931),
Henry Bacon (1866 – 1924)

GPS: N 40.453038 W 80.005928



"To Colonel James Anderson, founder of free libraries in Western Pennsylvania. He opened his library to working boys and on Saturday afternoons acted as librarian, thus dedicating not only his books, but himself to the noble work. This monument is erected in grateful remembrance by Andrew Carnegie, one of the "working boys" to whom were thus opened the precious treasures of knowledge and imagination through which youth may ascend."

George Washington Memorial

LOCATION: North end of West Park, near intersection of North Avenue and Sherman Avenue

YEAR: 1891

ARTIST: Edward Ludwig Albert Pausch (1856 – 1931),
copied after Jean Antoine Houdon (1741 – 1828)

GPS: N 40.45421 W 80.00950



Hampton Battery Memorial

LOCATION: East Park; Cedar Avenue near Anderson Street

YEAR: 1871

ARTIST: Unknown

GPS: N 40.45089 W 80.00096



Maine Memorial

LOCATION: West Park; on the outside wall of the National Aviary

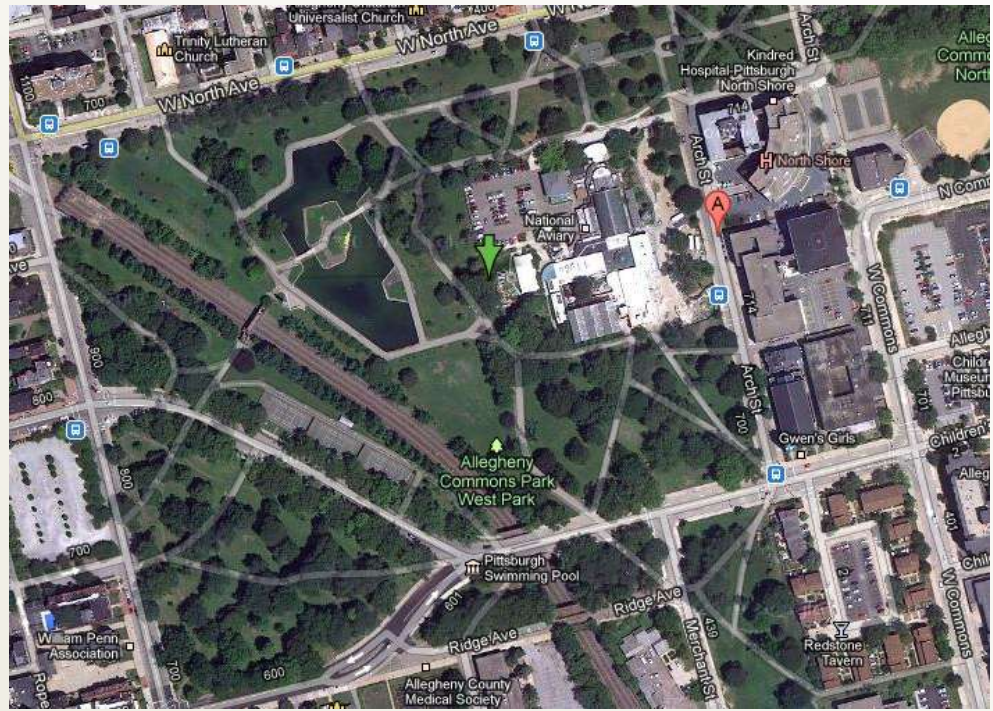
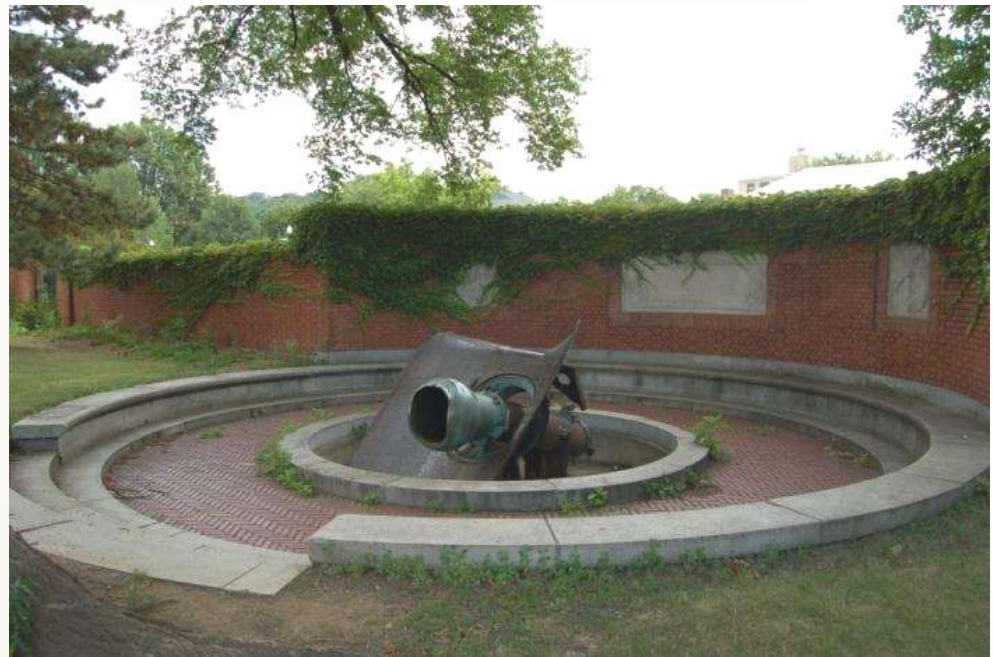
YEAR: 1914, Dedicated in 1915

SCULPTOR: Charles Keck (1875 – 1951)

ARCHITECT: Stanley Roush (1885 – 1946)

DESIGNER: William E. Clark

GPS: N 40.453158 W 80.010944



Soldiers' Monument (Allegheny County Soldiers of the Civil War)

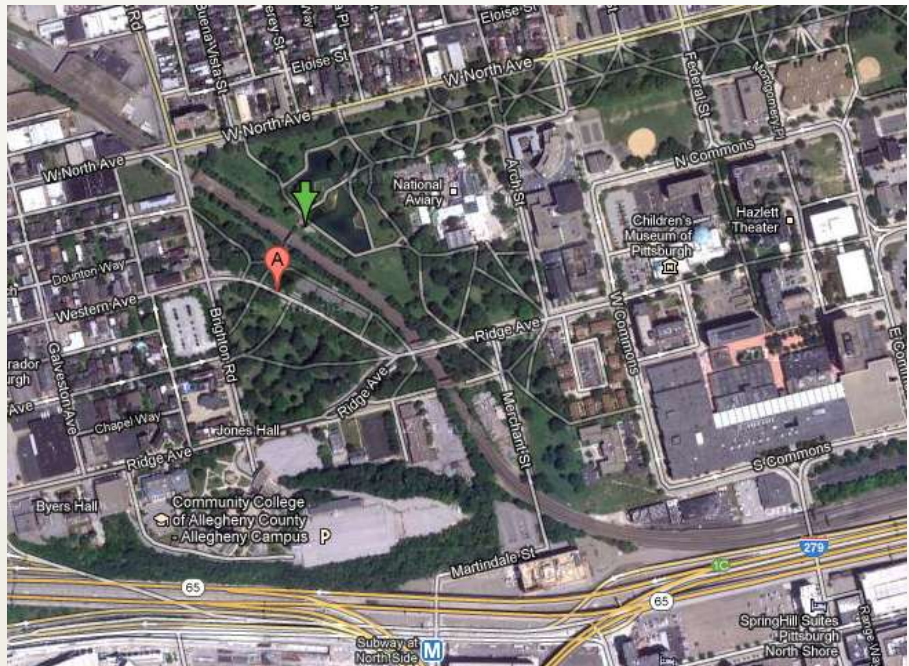
LOCATION: West Park; By Lake Elizabeth, west of
the National Aviary

YEAR: 1871

ARTIST: Peter C. Reniers (1825 – 1894)

ARCHITECTS: Louis Morganroth
George Pauley
Robert Schmetz (b. 1898)

GPS: N 40.45305 W 80.012505



Thomas Armstrong

LOCATION: Allegheny Commons Park – West Park; in lawn in front of National Aviary, near intersection of Ridge Avenue and Arch Street (visible from Ridge Avenue)

YEAR: 1889

SCULPTOR: Unknown

ARCHITECT: A.E. Windsor & Co., Allegheny

GPS: N 40.452017 W 80.009587



World War I and II Honor Roll - 23rd Ward

LOCATION: East Park; on the corner where Sandusky and Stockton Avenue intersect South Commons (formerly at East Ohio Street & Cedar Avenue)

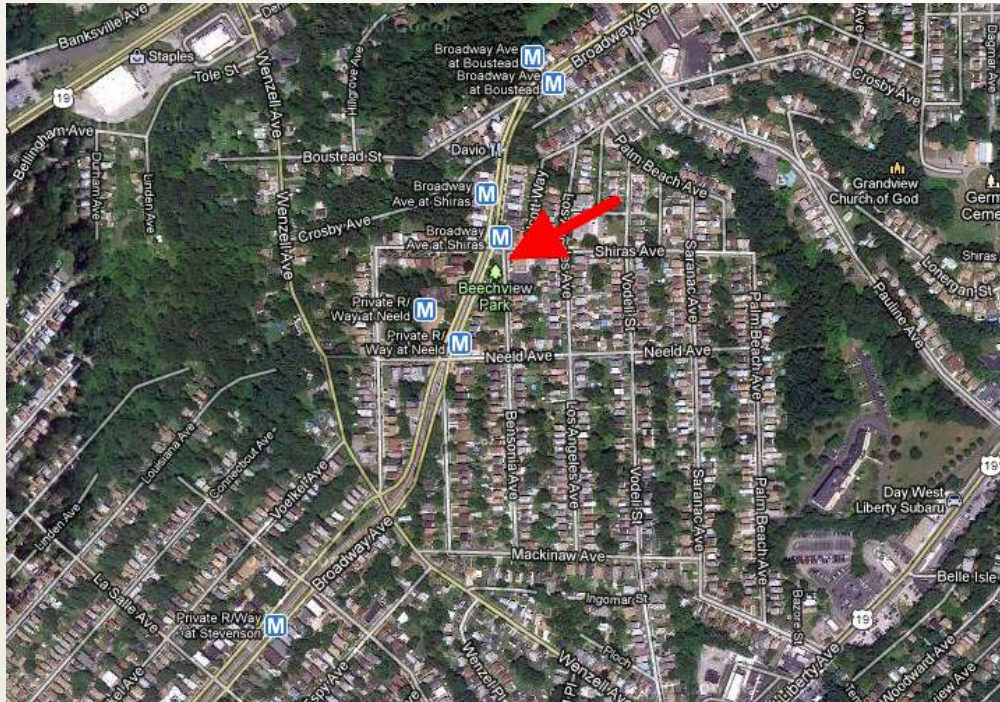
GPS: N 40.450662 W 80.002763



Beechview Community War Memorial

LOCATION: Beechview Park; Broadway Avenue and Shiras Avenue, right at Shiras T stop

GPS: N 40.403828 W 80.030175

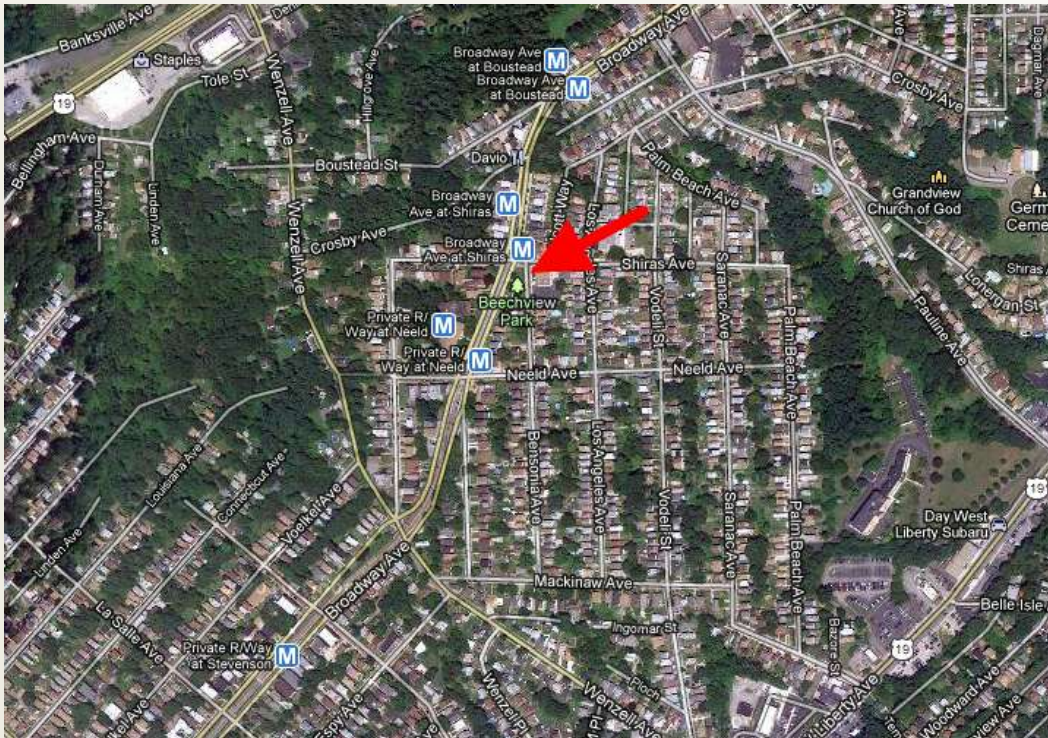


Flagpole with Plaque / Time Capsule

LOCATION: Beechview Park; Broadway Avenue and Shiras Avenue, right at Shiras T stop

YEAR: 2005

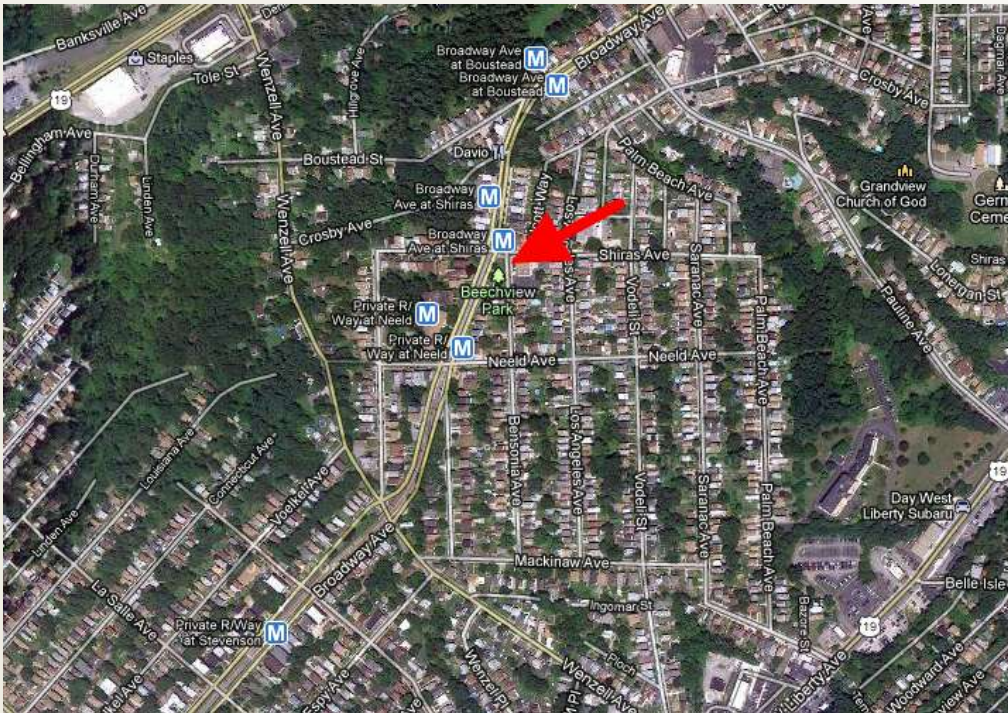
GPS: N 40.403828 W 80.030175



World War I Honor Roll

LOCATION: Beechview Park; Broadway Avenue and Shiras Avenue, right at Shiras T stop

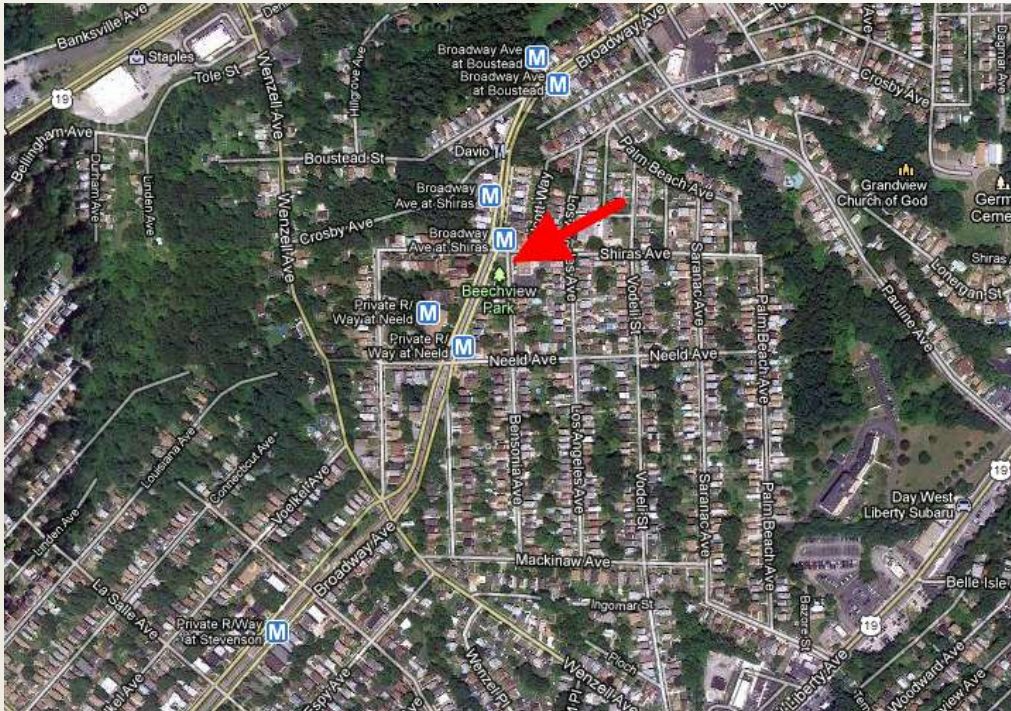
GPS: N 40.403828 W 80.030175



World War II Honor Roll

LOCATION: Beechview Park; Broadway Avenue and Shiras Avenue, right at Shiras T stop

GPS: N 40.403828 W 80.030175



Warrington World War I Honor Roll

LOCATION: E Warrington Avenue and Estella Avenue,
east of Warrington Field

YEAR: 1924

GPS: N 40.42105 W 80.000609



Warrington World War II Memorial

LOCATION: E Warrington Avenue and Estella Avenue, east of Warrington Field

YEAR: 1952

GPS: N 40.42105 W 80.000609



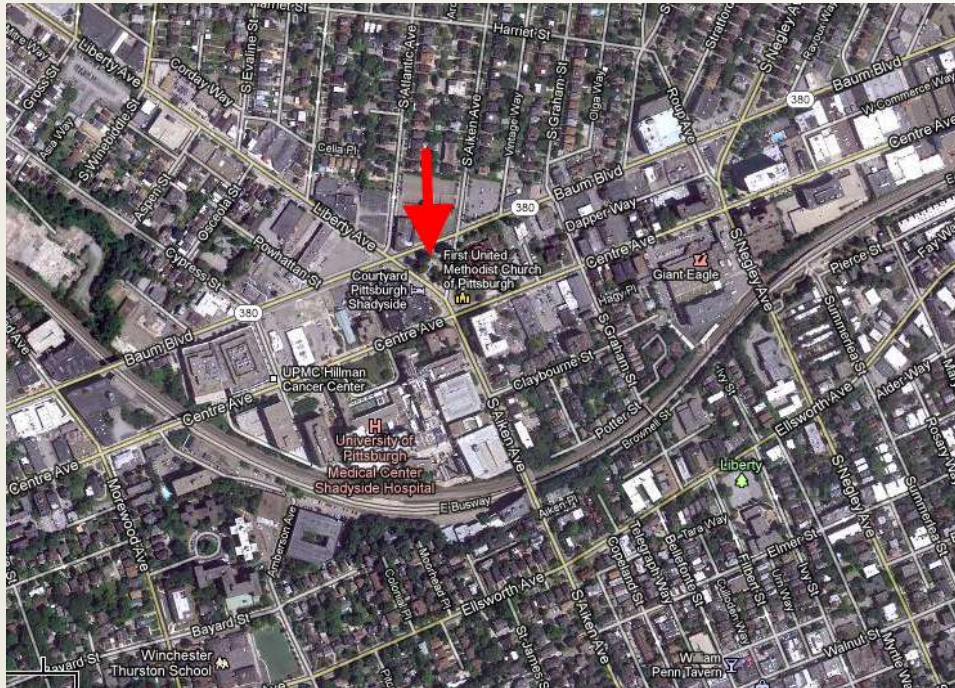
World War II - Eighth Ward Memorial

LOCATION: Morrow Park; Intersection of Baum Boulevard, South Aiken and Liberty Avenue

YEAR: 1949

ARTIST: Frank Vittor (1888 – 1968)

GPS: N 40.456605 W 79.939077

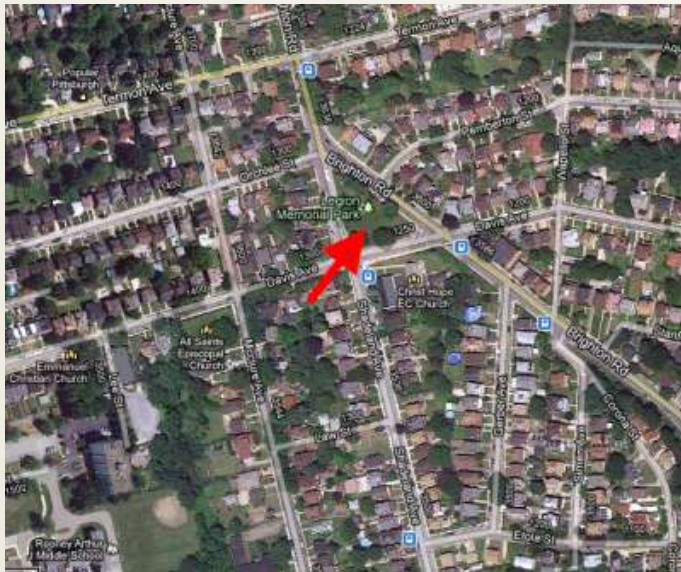


Korean War, Vietnam War, Persian Gulf War Monument - 27th Ward

LOCATION: Legion Park; Southwest corner where Davis Avenue and Shadeland Avenue meet

YEAR: 1995

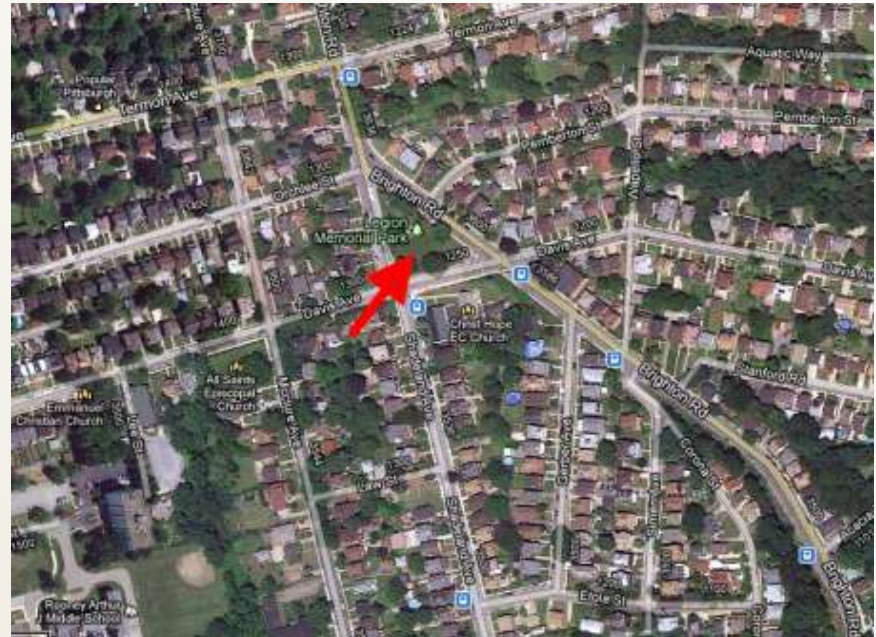
GPS: N 40.481599 W 80.034859



Legion Marker with Flagpole

LOCATION: Legion Park; North corner where Brighton Road and Shadeland Avenue meet

GPS: N 40.48222 W 80.035061



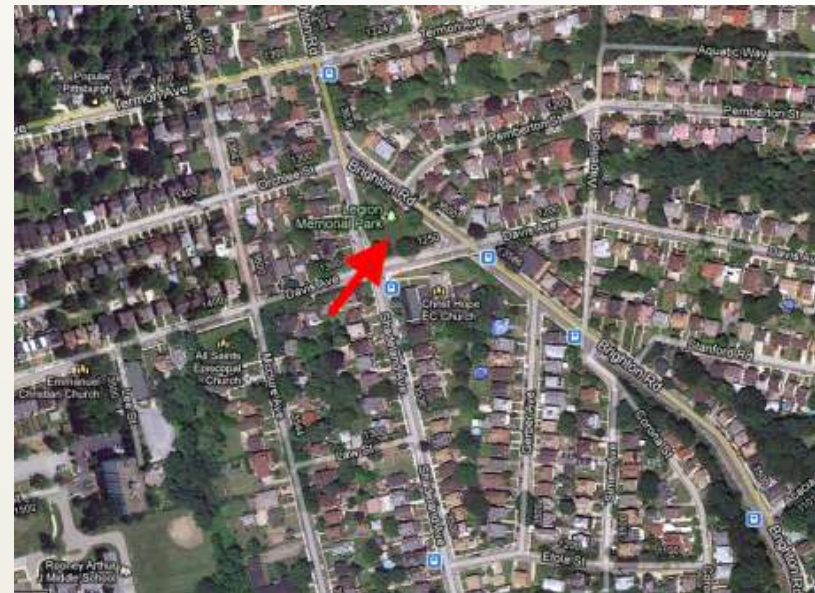
Sacrifice (World War I Honor Roll)

LOCATION: Legion Park; Center of park

YEAR: 1922

ARTIST: Allen George Newman (1875 – 1940)

GPS: N 40.481918 W 80.034778

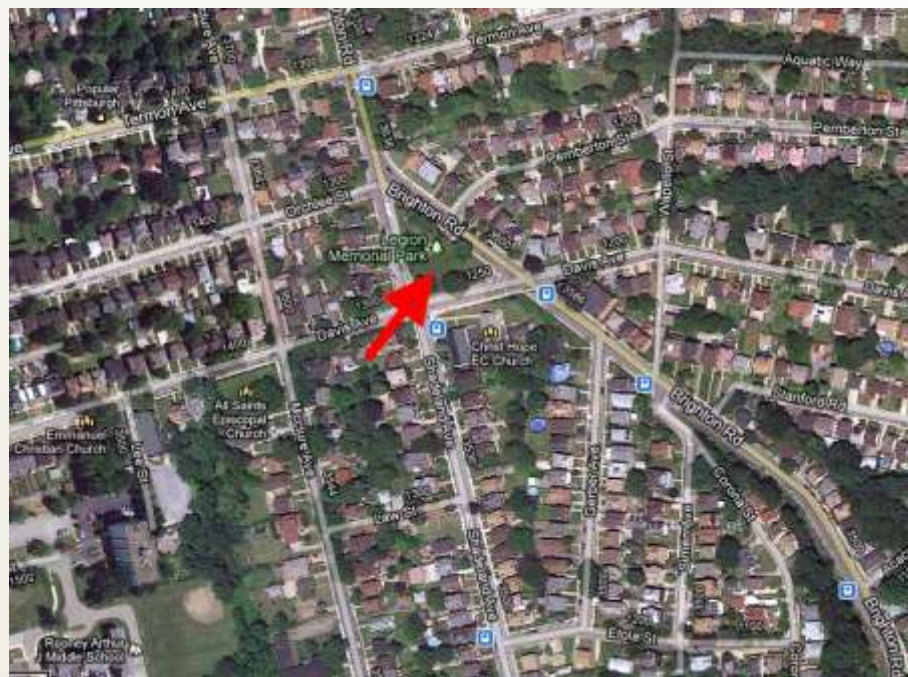


World War II Honor Roll – 27th Ward

LOCATION: Legion Park; North corner
where Brighton Road and Shadeland
Avenue meet

YEAR: 1950

GPS: N 40.482109 W 80.034966

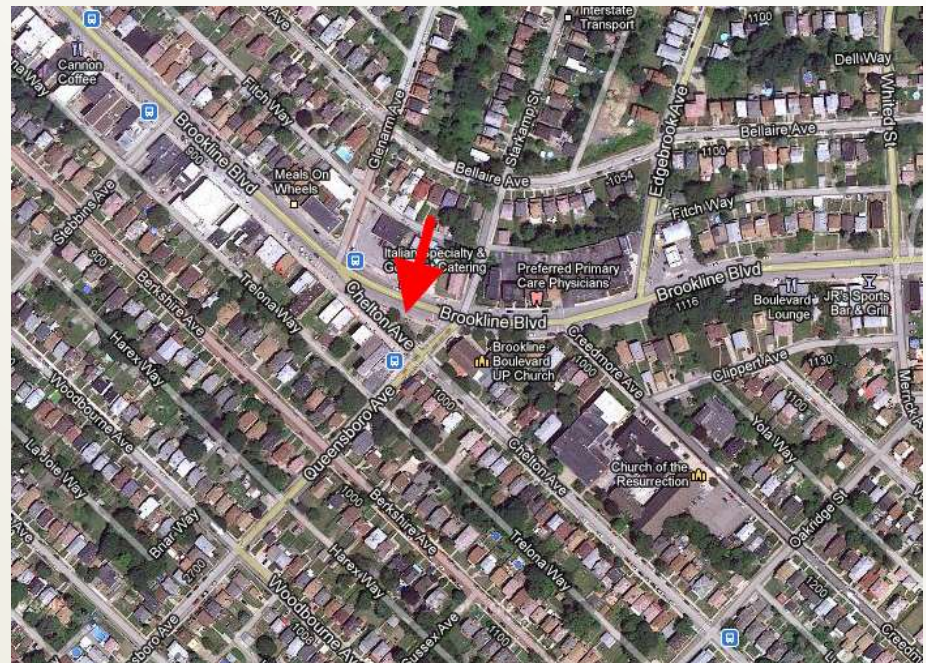


All American Veterans Memorial and Cannon “Brookline Monument and Cannon”

LOCATION: Brookline Park; Chelton Avenue and Brookline Boulevard

YEAR: 1995

GPS: N 40.391766 W 80.017148

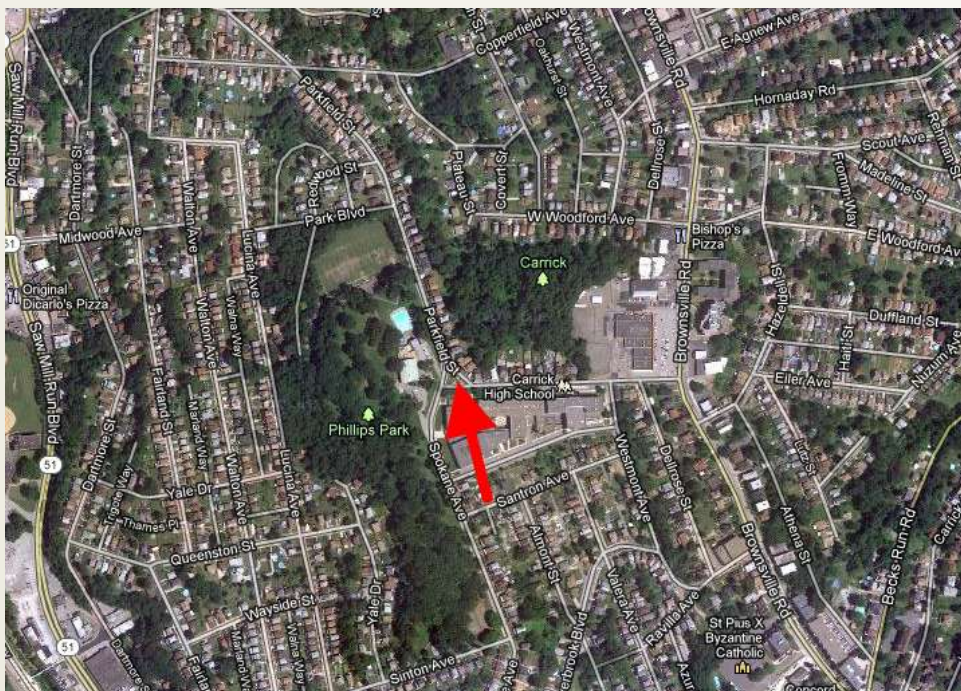


World War I Honor Roll – dedicated to the men of Carrick

LOCATION: Spokane Avenue and Parkfield Street, by Phillips Park

YEAR: 1923

GPS: N 40.391306 W 79.99027



Boulevard of the Allies Memorial Columns

LOCATION: Boulevard of the Allies and
Grant Street

YEAR: 1922

ARTIST: Frank Vittor (1888 - 1968)

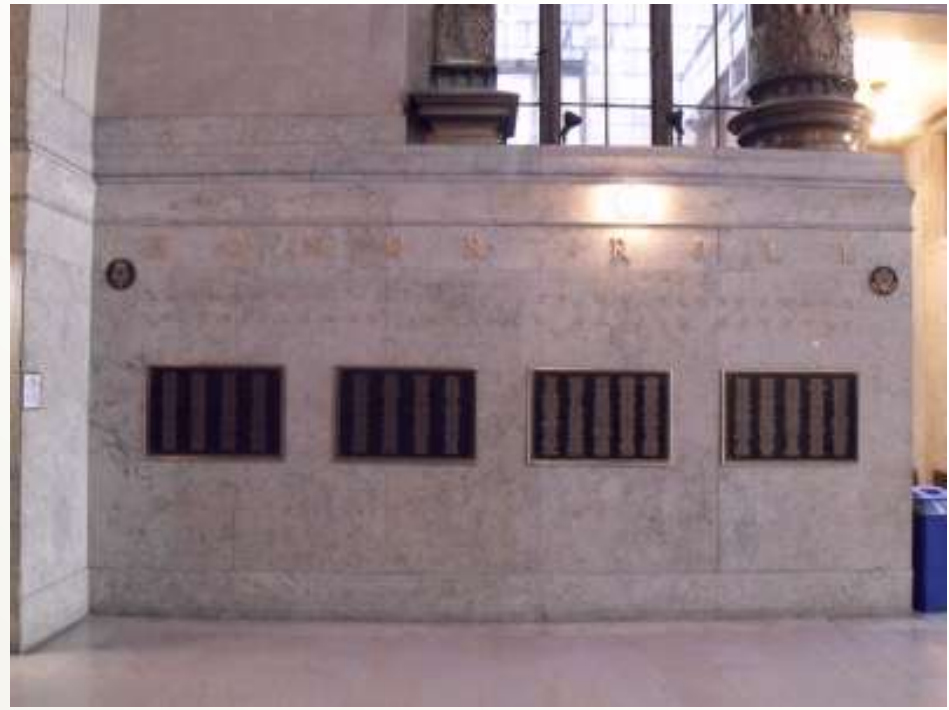
GPS: N 40.437007 W 79.998201



Employees of the City of Pittsburgh in the Armed Service of our Country Memorial Honor Roll

LOCATION: 414 Grant Street Pittsburgh, PA
15219; First floor lobby, located near
Ross Street entrance

GPS: N 40.438369 W 79.997313



First Ward Honor Roll Veterans Memorial, also known as, Jail Triangle

LOCATION: Traffic island bordered by Sixth Avenue,
Diamond Street, and Forbes Avenue; Between the old
County Jail and the Manor Building

GPS: N 40.438163 W 79.994574



In commemoration of The Centennial Anniversary of the U.S. Civil War/Veterans Memorial Honor Roll

LOCATION: 414 Grant Street, Pittsburgh, PA 15219; Located on the right wall of the portico to the City-County Building Grant Street entrance

YEAR: 1964

GPS: N 40.438369 W 79.997313



World War I Honor Roll

LOCATION: North corner of East Carnegie Park;
Intersection of Alter Street and Doolittle Street

GPS: N 40.414901 W 80.074818



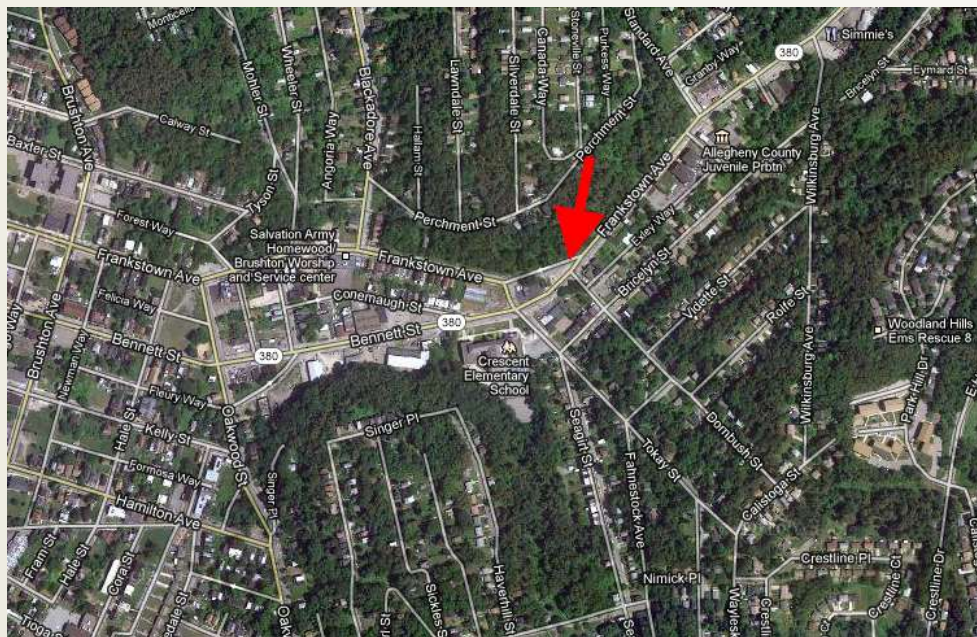
Homewood/Brushton World War II Memorial - 13th Ward

LOCATION: Eastern intersection of Frankstown Avenue and Bennett Street (by Dombush Street)

YEAR: 1948

ARTIST: Allen George Newman (1875 – 1940)

GPS: N 40.45509 W 79.88013



World War I Memorial

LOCATION: West End Park; South of the Wallbridge Street and Herschel Street intersection, in the park behind the gazebo and a small playground

YEAR: 1923

ARTIST: Frank Vittor (1888 - 1968)

GPS: N 40.43703 W 80.037609



World War I and World War II Memorial Honor Roll – Dedicated to Greenfield men and woman

LOCATION: Beechwood Boulevard
and Boulevard Drive at McGee Field

GPS: N 40.426647 W 79.937596



Alexander Negley, who served in the War of the Revolution, and his wife, Mary Ann Burkstresser, Memorial

LOCATION: Highland Park - Memorial Grove

ERECTED BY: Sarah Jane, Negley Mellon

DATE: 1912

GPS: N 40.48012 W 79.918488

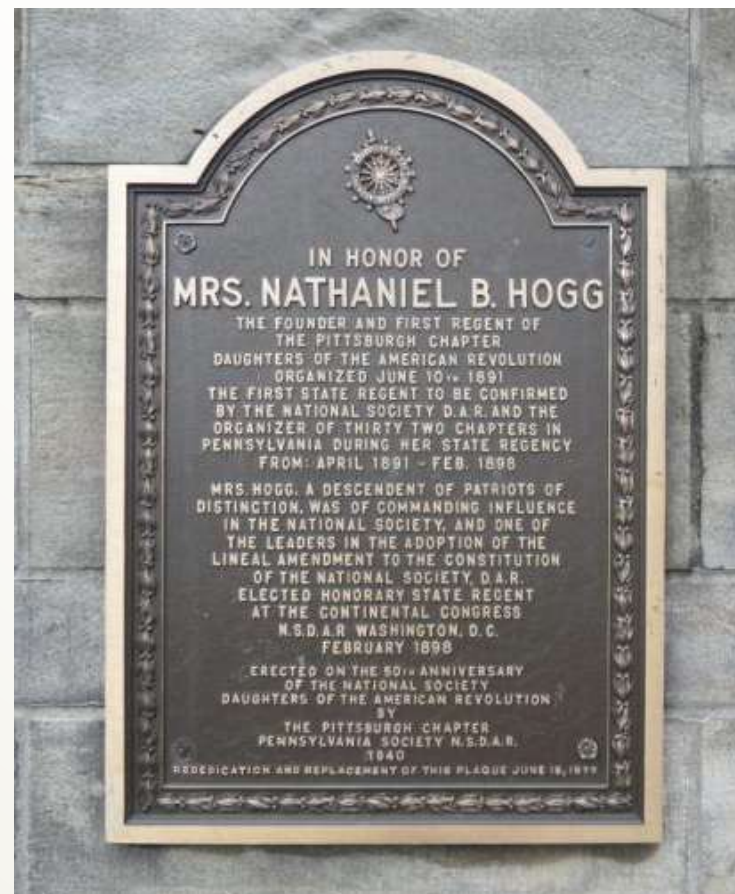


Daughters of American Revolution

LOCATION: Highland Park; Main entrance off of North Highland Avenue, at rear of Welcome Entry Gardens

YEAR: 1940

GPS: N 40.479655 W 79.915288



HIGHLAND PARK



World War I Memorial

LOCATION: 46th Street and
Butler Street in Leslie Park

YEAR: 1921

ARTIST: Frank Vittor (1888 - 1968)

GPS: N 40.472829 W 79.958519



Abram R. Woolley (A.R.W.) Tablet

LOCATION: Arsenal Park; On right façade of Allegheny Arsenal Powder Magazine (building)

GPS: N 40.466768 W 79.960427



Allegheny Arsenal Lawrenceville 1814 - 1913 (Arsenal VFW) Memorial

LOCATION: Arsenal Park; On left façade of
Allegheny Arsenal Powder Magazine
(building)

YEAR: July 4, 1965

GPS: N 40.466768 W 79.960427



Civil War Cannon

IX Shell Gun Richmond 1855

Fired 1681 rounds

LOCATION: Arsenel Park; On 40th Street side
close to Arsenal Head Start and Middle
School

GPS: N 40.467783 W 79.961437



War of 1812 Soldiers and Sailors Memorial Tablet

LOCATION: Arsenal Park; On center façade of Allegheny Arsenal Powder Magazine (building)

YEAR: 1909

GPS: N 40.466768 W 79.960427



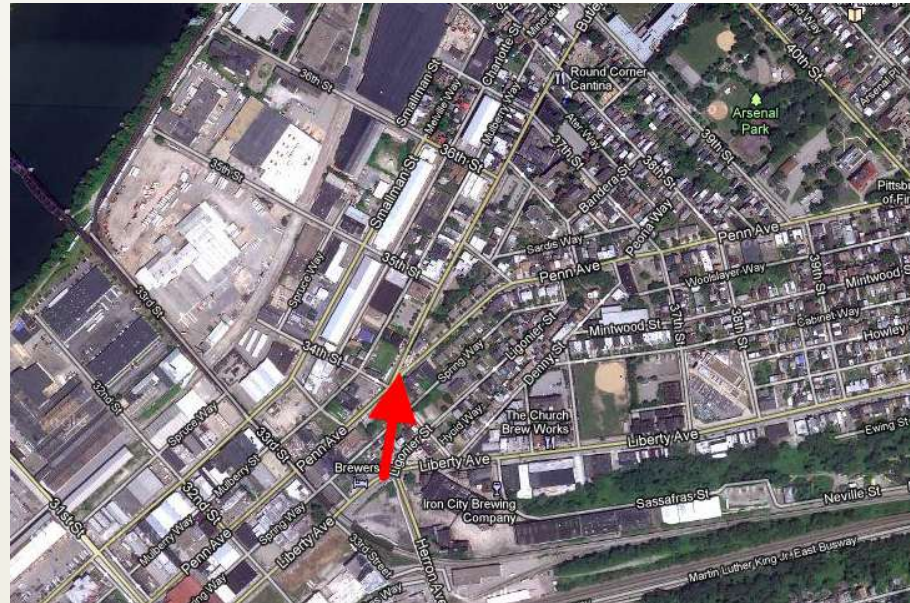
Doughboy Statue - 1921 World War I

LOCATION: 34th Street , Butler Street, and Penn Avenue

YEAR: 1919 - 1921

ARTIST: Allen George Newman (1875 – 1940)

GPS: N 40.462938 W 79.966928

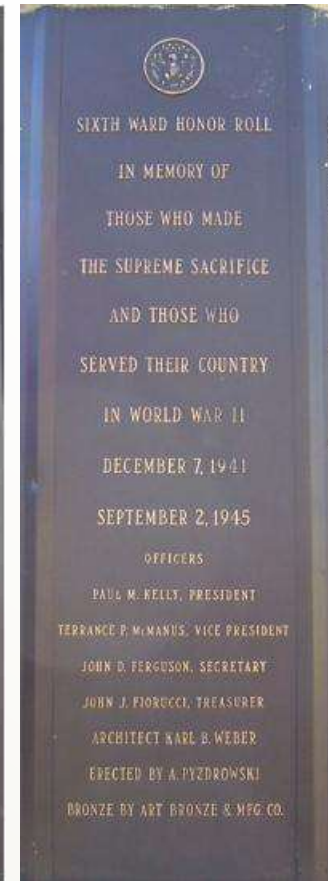
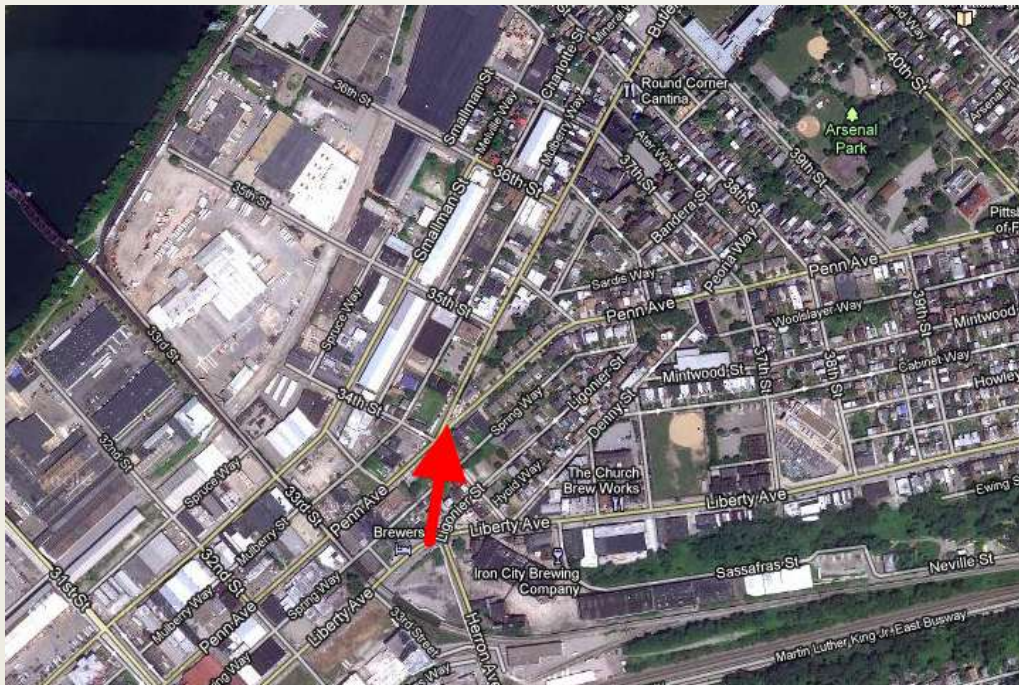


Doughboy Plaque - 6th Ward

LOCATION: 34th Street, Butler Street, and Penn Avenue

YEAR: 1984

GPS: N 40.462938 W 79.966928



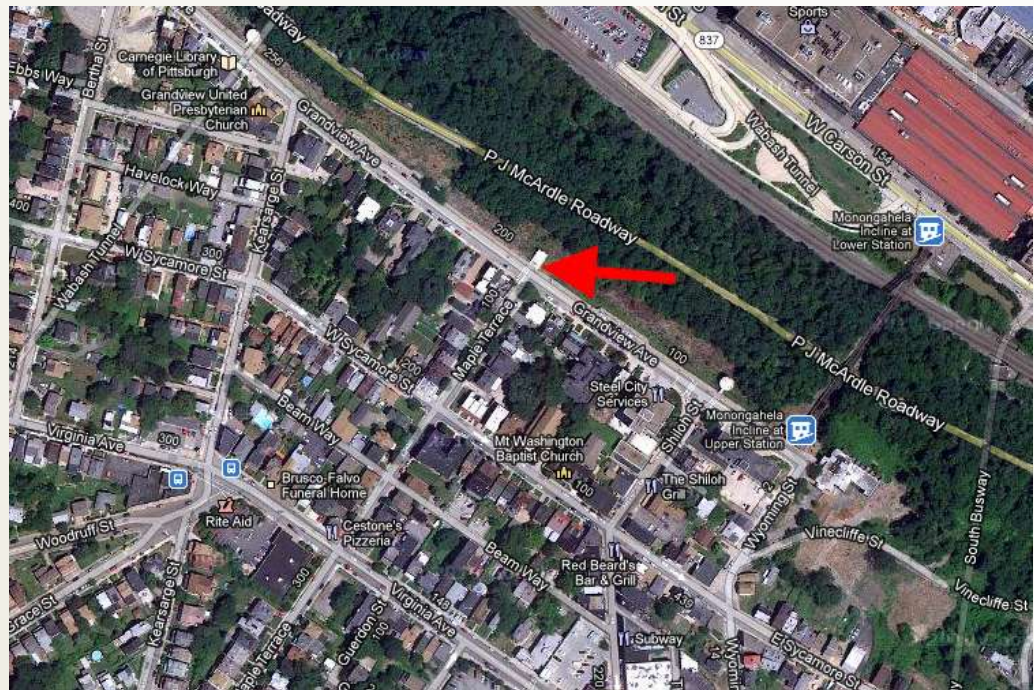
LAWRENCEVILLE: LOWER

Leo Club of Grandview Plaque - All Wars

LOCATION: Grandview Avenue at
Maple Terrace, overlooking downtown

YEAR: 1969

GPS: N 40.432364 W 80.008002

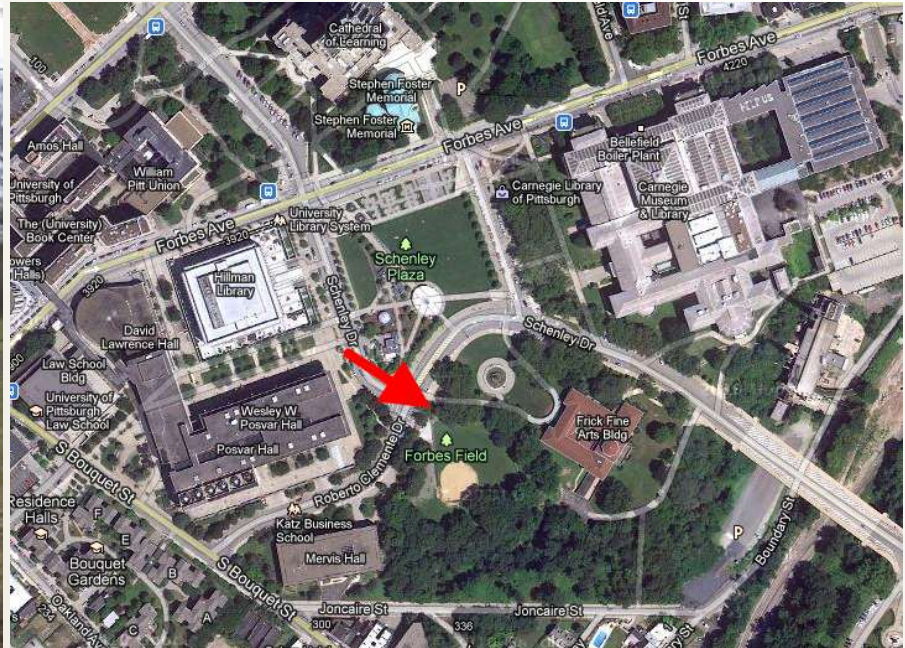


Fourth Ward Memorial

LOCATION: At the southeast corner of the intersection of Roberto Clemente Drive and Schenley Drive

YEAR: 1983

GPS: N 40.441819 W 79.952574



Thomas F. Enright, World War I

We remember: Thomas F. Enright

Born: May 3, 1887

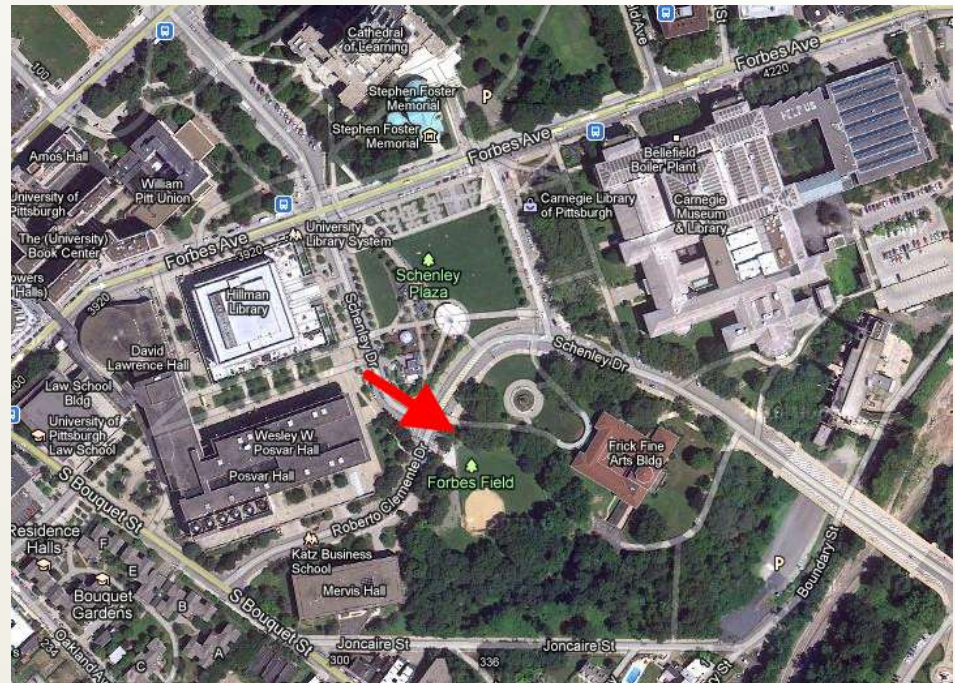
Enlisted: September 15, 1909

First man killed in action on November 3, 1917
WWI

LOCATION: At the base of Fourth Ward Memorial located at the southeast corner of the intersection of Roberto Clemente Drive and Schenley Drive

YEAR: 1930

GPS: N 40.441819 W 79.952644



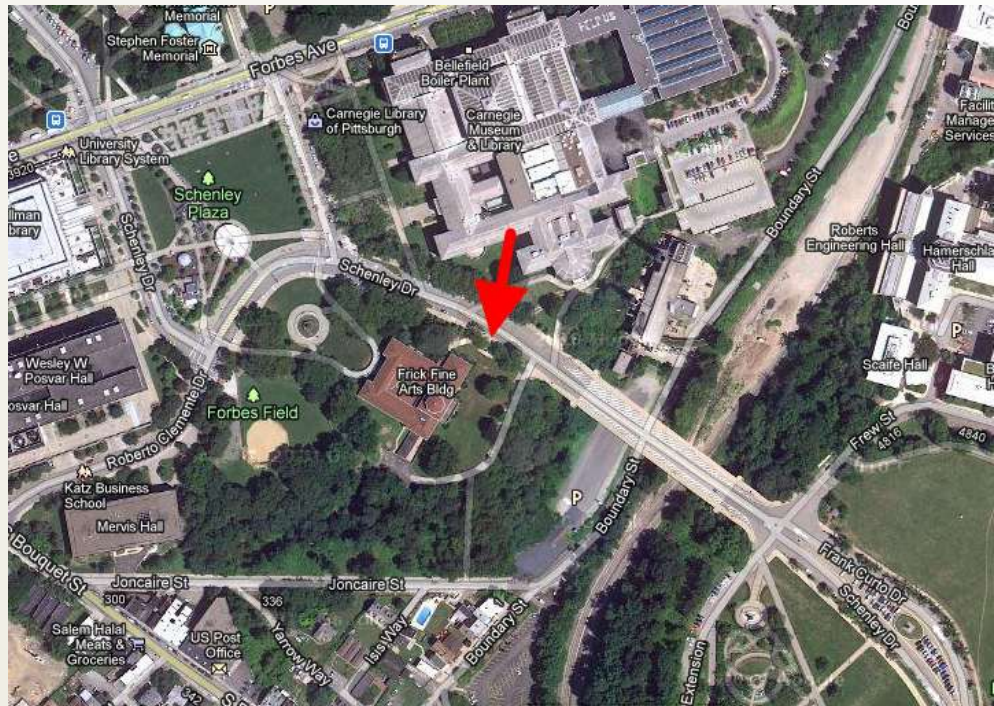
The Hiker (Spanish American War Monument)

LOCATION: Near Frick Fine Arts Building, Schenley Drive

YEAR: 1925

ARTIST: Allen George Newman (1875 – 1940)

GPS: N 40.441833 W 79.950486



Tree Memorial dedicated to the mothers of the defenders of our nation

LOCATION: Near Frick Fine Arts Building, Schenley Drive; In front of tree to the left of *The Hiker* (Spanish American War Monument)

YEAR: Mothers' Day; May 9, 1926

GPS: N 40.44185 W 79.950381

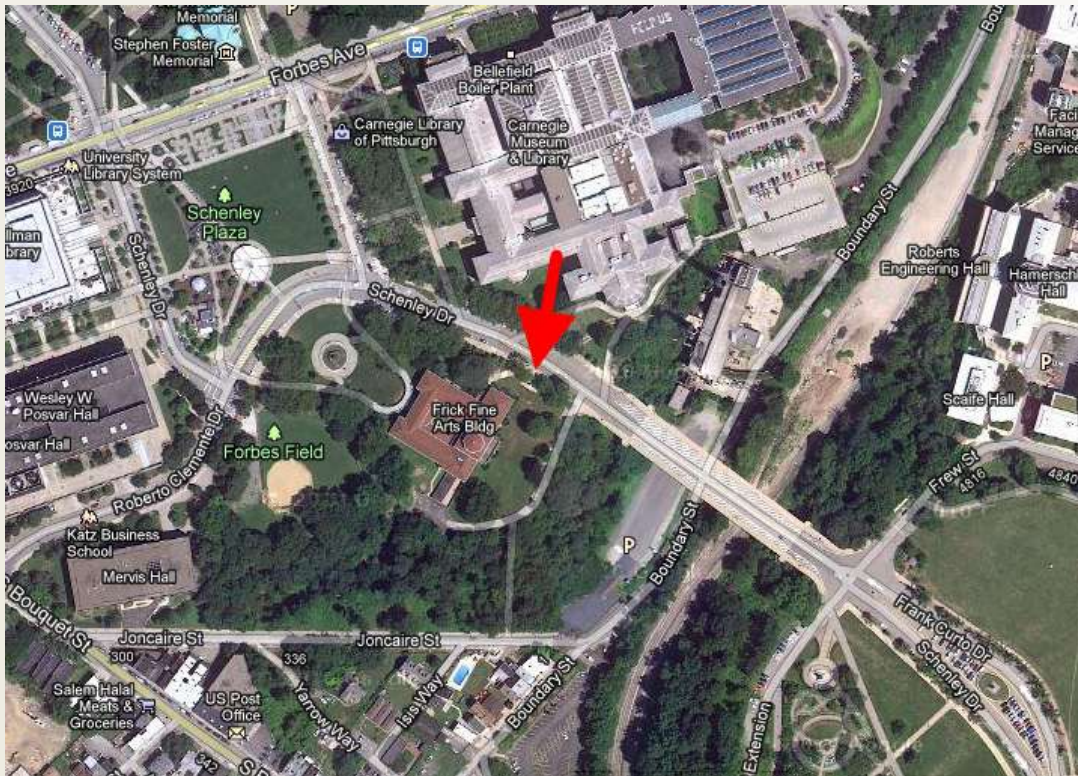


Tree Memorial dedicated to the wives of the defenders of our nation

LOCATION: Near Frick Fine Arts Building, Schenley Drive;
In front of tree to the right of *The Hiker* (Spanish American War Monument)

YEAR: Mothers' Day; May 9, 1926

GPS: N 40.441907 W 79.950506



World War Monument

LOCATION: Saw Mill Run Boulevard
(Route 51) at Maytide Street

GPS: N 40.38466 W 79.995257



Honor Roll Armed Forces (Polish Hill Monument)

LOCATION: Corner of Brereton Street
and Dobson Street, across from
Immaculate Heart of Mary

YEAR: 1976

GPS: N 40.456733 W 79.967315



Regent Square Monument: World War II, Korea, Vietnam

LOCATION: Milton Street and Henrietta Street at The Environmental Charter School

YEAR: 1945

GPS: N 40.435659 W 79.897133



All Wars Memorial

LOCATION: In front of Langley High School at the intersection of Sheraden Boulevard and Hillsboro Street

YEAR: May 30, 1956

GPS: N 40.453421 W 80.054213



Armstrong Monument - 17th Ward, 1954, World War II, Korean War

LOCATION: At 12th Street and Sarah Street; Southwest corner of
Armstrong Field

YEAR: 1954

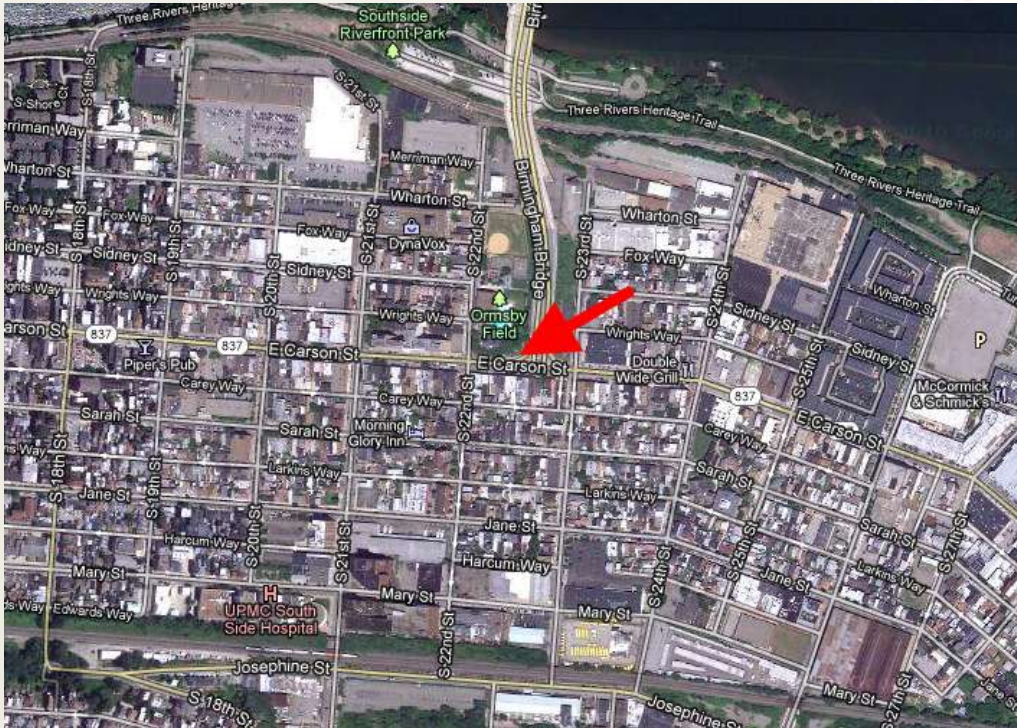
GPS: N 40.427749 W 79.986197



World War I Honor Roll Memorial - 16th Ward

LOCATION: 22nd Street and E Carson Street

GPS: N 40.428507 W 79.97409



World War I Memorial, 1932

LOCATION: E Carson Street and 10th
Street

YEAR: 1932

SCULPTOR: Frank Aretz (b. 1876)

ARCHITECT: Stanley Roush
(1885 - 1946)

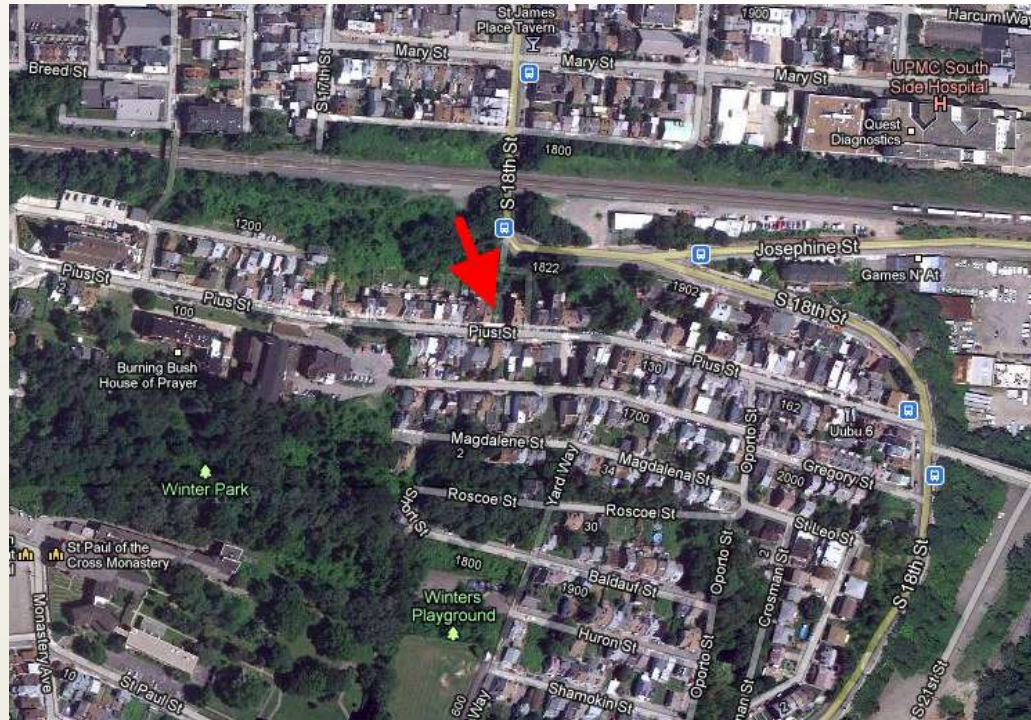
GPS: N 40.428605 W 79.988696



Pius Street All Wars Memorial

LOCATION: 105 Pius Street, Pittsburgh, PA 15203; North side of street overlooking downtown (There is a flagstone path to a bronze plaque with a planter in front, and a wrought iron fence behind, with bushes in between)

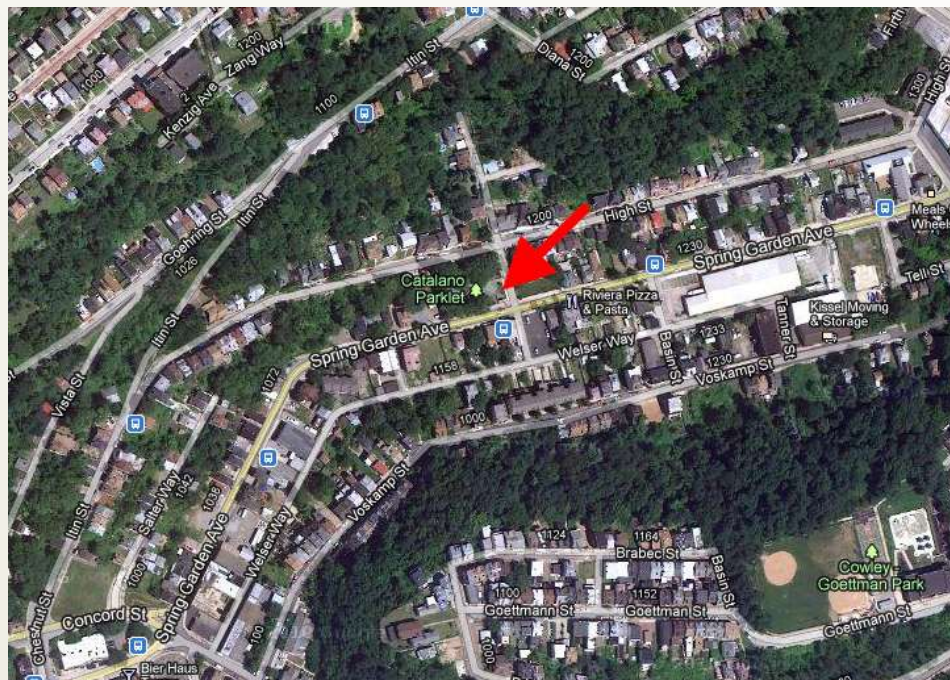
GPS: N 40.424548 W 79.980996



World War I and World War II Memorial Honor Roll

LOCATION: Catalano Park; Spring Garden
Avenue at Arcola Way

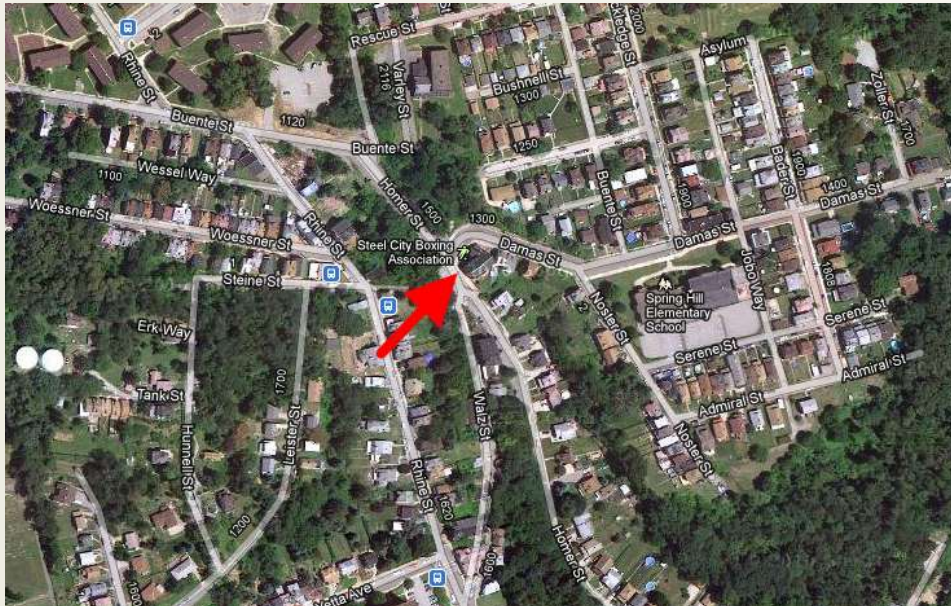
GPS: N 40.460148 W 79.991648



Spring Hill Honor Roll – World War I 1917-1919 (24th Ward World War I Monument)

LOCATION: Damas Street and Homer Street

GPS: N 40.465429 W 79.991278

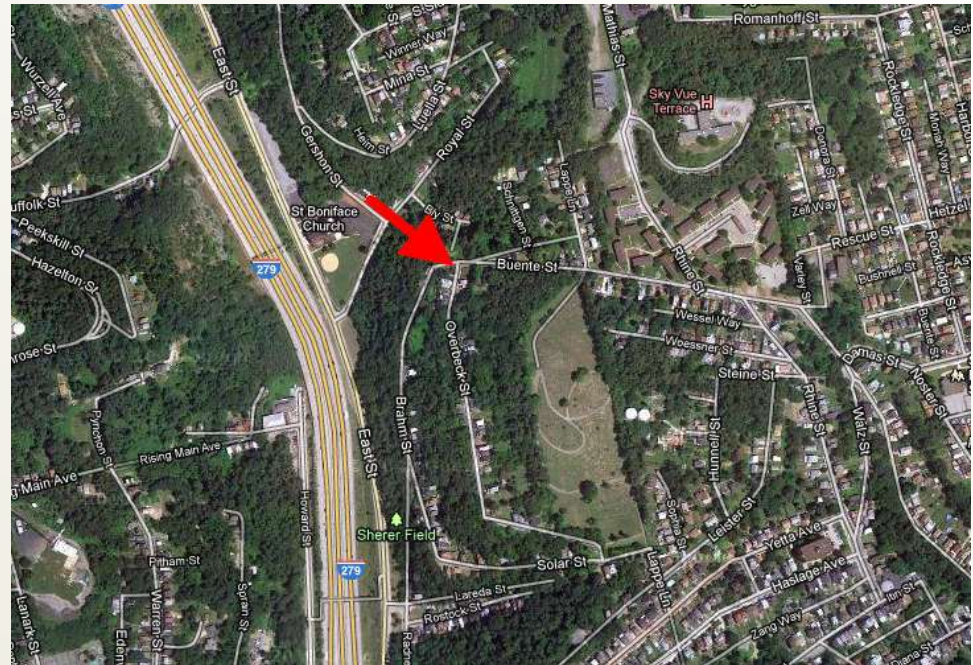


SPRING HILL-CITY VIEW

Veterans Honor Roll - 19th Ward

LOCATION: Overbeck Street and Brahm Street

GPS: N 40.466606 W 79.997786



World War II - 24th Ward

LOCATION: Rhine Street; Between
Hastage Avenue and Zang Way

GPS: N 40.462868 W 79.991215



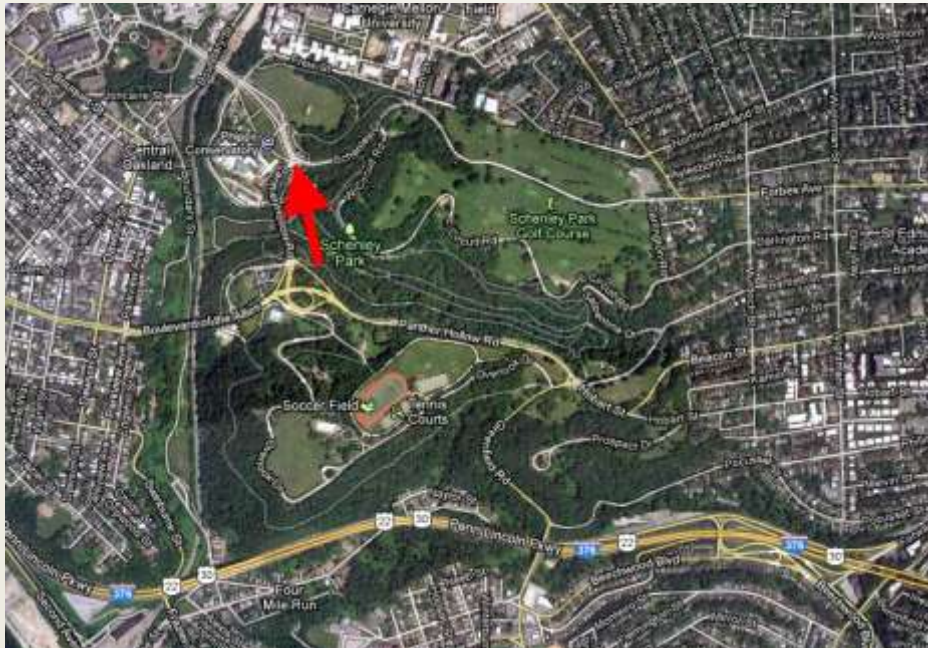
World War I Medical Hygiene Society, 1922 - Dedicated to doctors/nurses (Hygeia Monument, Physicians Monument – World War I)

LOCATION: Phipps Conservatory in Schenley Park at
beginning of Panther Hollow Road

YEAR: 1922

ARTIST: Giuseppe Moretti (1857 – 1935)

GPS: N 40.438766 W 79.946716



Colonel Alexander Leroy Hawkins Monument - Spanish, American, Philippine Insurrection

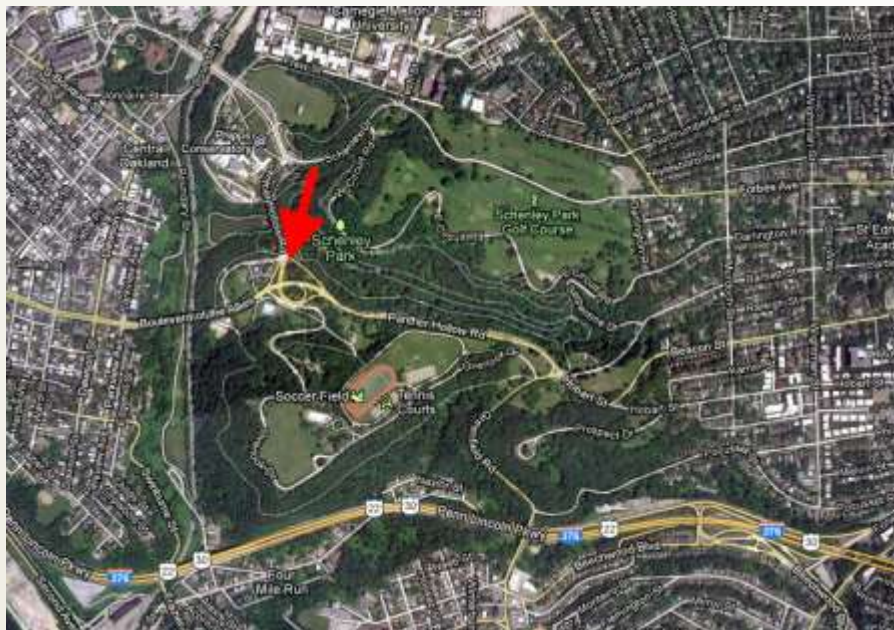
LOCATION: Schenley Park; South end of
Panther Hollow Bridge

YEAR: 1904

Sculptor: William Couper (1853 - 1942)

Architect: Albert Randall Ross (1868 - 1948)

GPS: N 40.435803 W 79.946259



Tenth PA Infantry Plaque

LOCATION: Schenley Park; South end of Panther Hollow Bridge, at the base of Colonel Alexander Leroy Hawkins Monument

SOURCE: DPW document

GPS: N 40.435803 W 79.946259



Catahecassa

LOCATION: Schenley Park; East Circuit Road,
near entrance to Serpentine Drive

YEAR: c. 1912

GPS: N 40.43545 W 79.935665

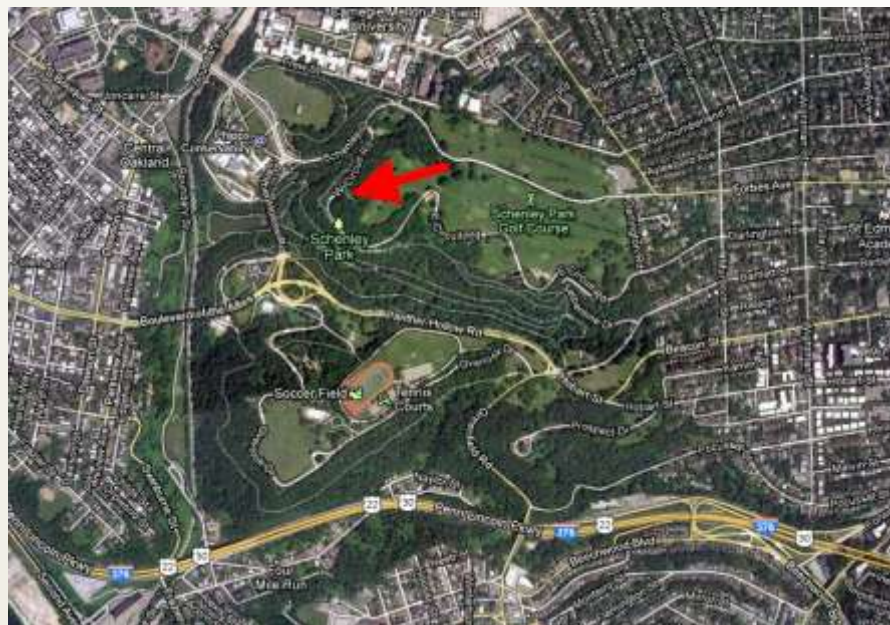


Memorial Grove Monument to Allegheny County World War I Veterans

LOCATION: Schenley Park; Across the street from Westinghouse Shelter on West Circuit Road

YEAR: May 27, 1920

GPS: N 40.437769 W 79.943991



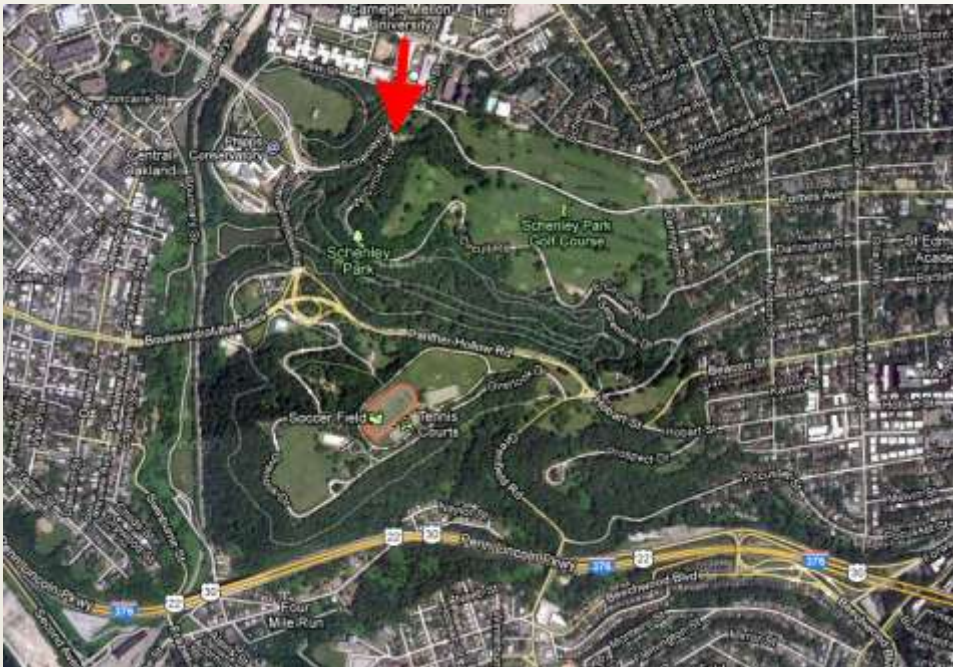
Flag Monument

LOCATION: Schenley Park; West Circuit Road immediately adjacent to the right of Westinghouse memorial and pond

YEAR: 1927

ARTIST: Harvey Schwab

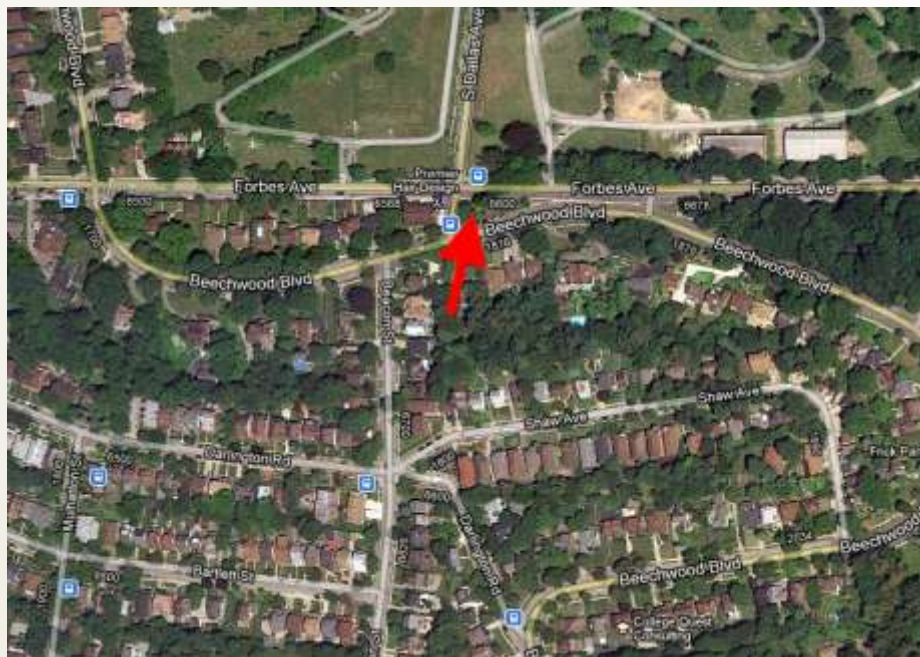
GPS: N 40.439299 W 79.943151



Veterans Monument, World War I, II, Korea, Vietnam (Vietnam Island)

LOCATION: Vietnam Park; South Dallas Avenue at Forbes Avenue and Beechwood Boulevard

GPS: N 40.437933 W 79.912834



In Honor of Robert Rownd - Ground Plaque

LOCATION: Schenley Park; By a tree on
Flagstaff Hill

(Next to a large tree on top of Flagstaff Hill
- SE corner)

YEAR: 1939

GPS: N 40.440252 W 79.94472



Second Ward Honor Roll

LOCATION: 22nd Street and Liberty Avenue

GPS: N 40.451601 W 79.981842



World War II Honor Roll - Swisshelm Fire Engine #19, Fifth District, 14th Ward

LOCATION: Commercial Street and Homestead
Street by Frick Park; Located to the right of
Fire Station No. 19 (159 Homestead Street)

GPS: N 40.42075 W 79.899831



SWISSHELM PARK

World War I - 24th Ward

LOCATION: In the middle of Ley Street and Lowrie Street, between Fidelity Bank and Billy's Food n Spirits

GPS: N 40.464454 W 79.982152



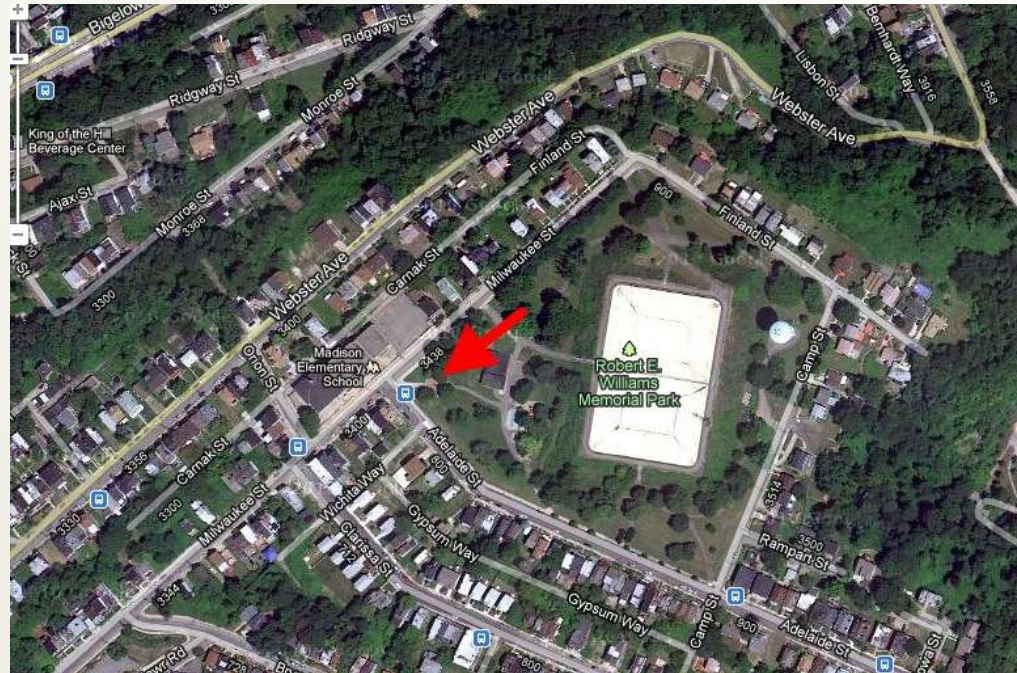
World War I Memorial (Bronze Statue)

LOCATION: Robert Williams Park (Schenley Heights);
At the intersection of Adelaide Street and
Milwaukee Street, across from Madison
Elementary School

ARTIST: Frank Vittor (1888 – 1968)

YEAR: 1922

GPS: N 40.454679 W 79.960367



World War I Memorial

LOCATION: 47 Wabash Street, Pittsburgh, PA 15220; In front of Carnegie Library of Pittsburgh, West End Branch, where Wabash Street intersects Neptune Street

YEAR: 1944

GPS: N 40.440105 W 80.034188





War Monuments on Private Property



PITTSBURGH
A MOST LIVABLE CITY

Alumni Veterans Honor Roll

Commemorates Allegheny High School Alumni who sacrificed their lives in World War I 1914-1918

LOCATION: Pittsburgh Allegheny K-5; A Traditional Academy Magnet School Serving Grades K-5; 810 Arch Street, Pittsburgh, PA 15212

YEAR: May 25, 1925

GPS: N 40.45336 W 80.00816



World War II Memorial

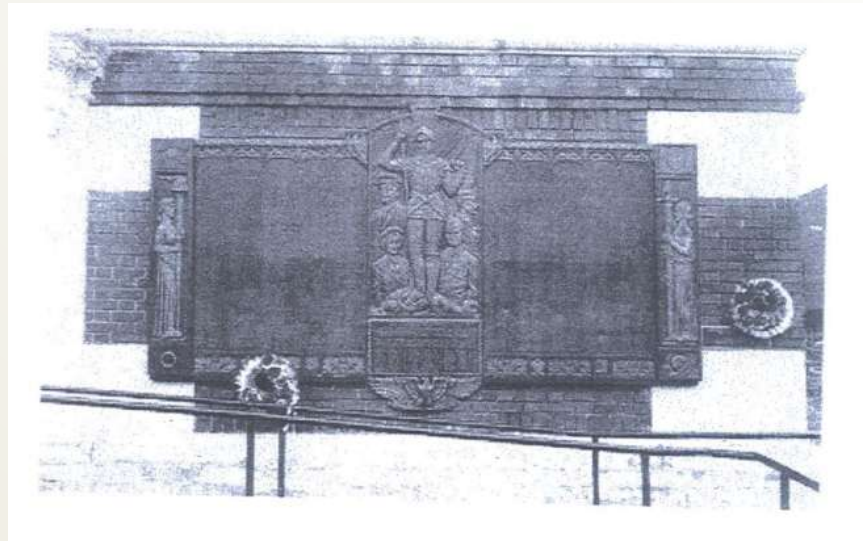
LOCATION: St. John Vianney Parish,
823 Climax Street, 15210;

The plaque is now in the courtyard of the
Parish Center building, which sits behind the
church building

YEAR: 1947

GPS: N 40.420104 W 79.993612

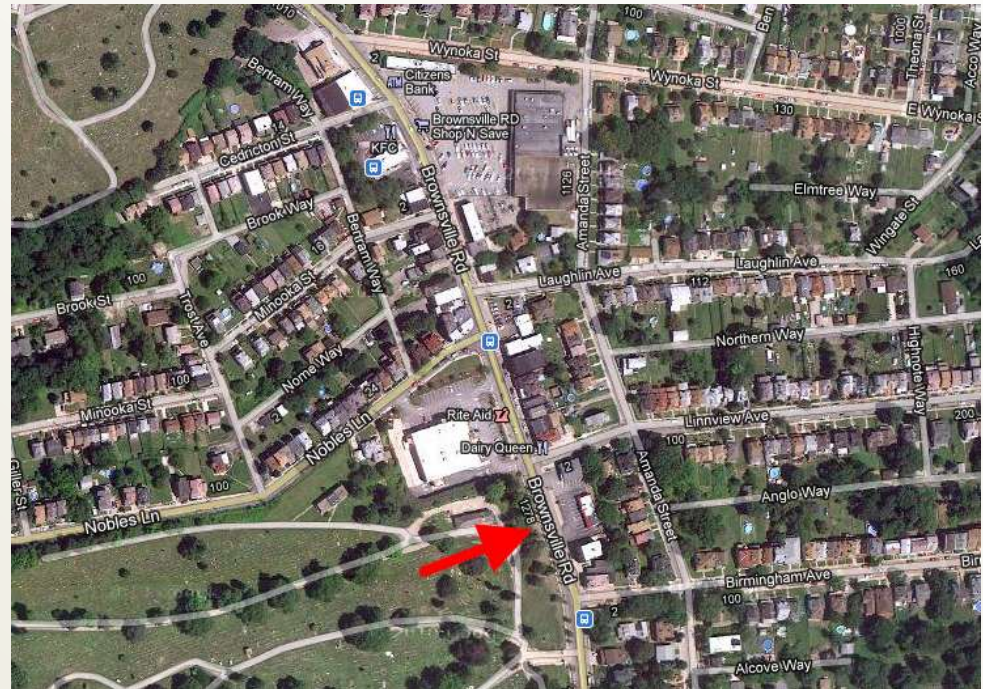
Not verified



Carrick Area All Wars Veterans Monument (Eagle Scout Project)

LOCATION: 1300 block of Brownsville Road, directly across from Dairy Queen

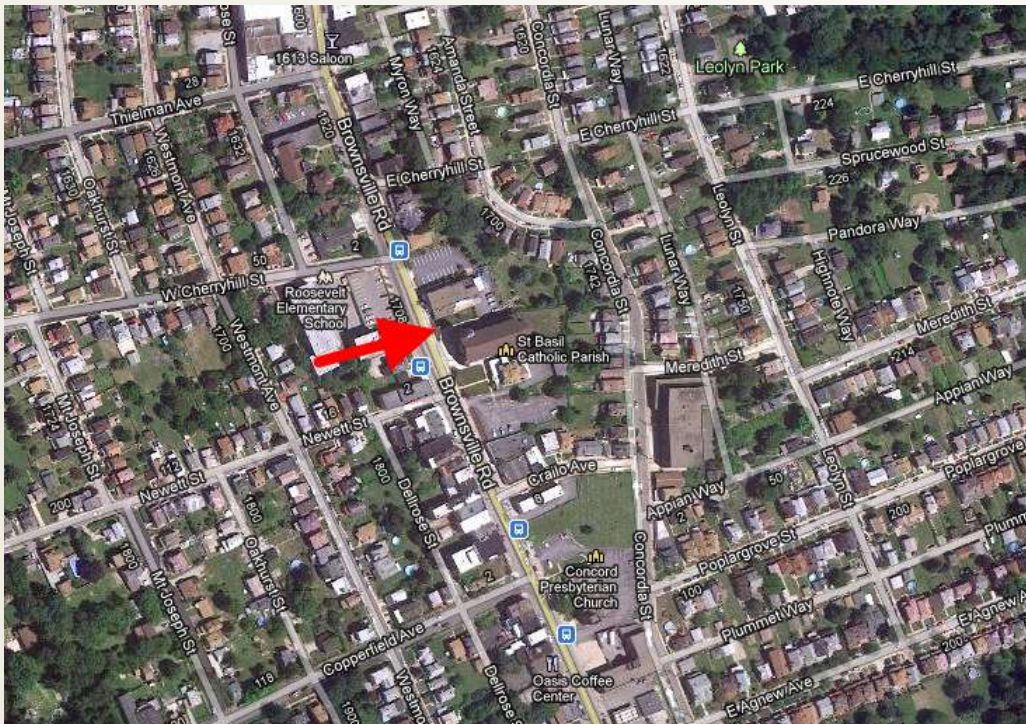
GPS: N 40.402655 W 79.989737



Honor Roll and Christ

LOCATION: Brownsville Road, in front of St. Basil Church at 1735 Brownsville Road, Pittsburgh, PA 15210

GPS: N 40.397702 W 79.988089

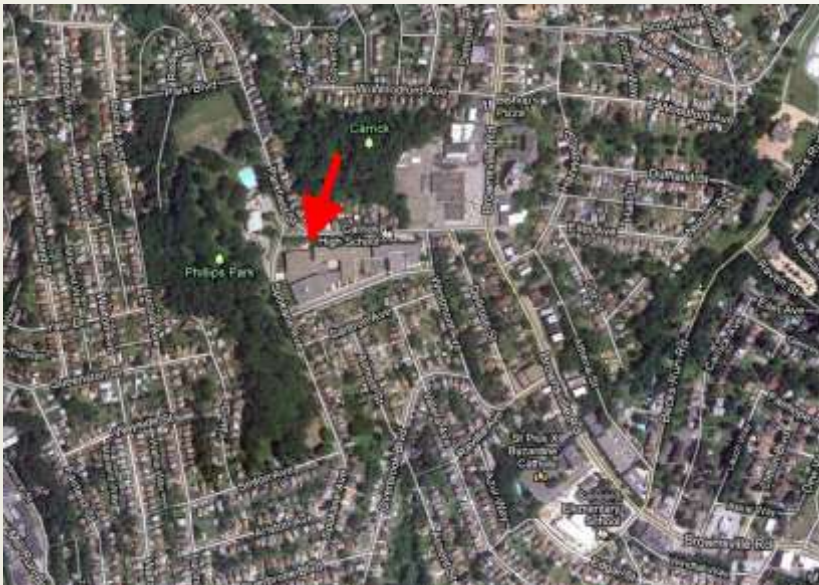


Carrick High School Veterans Wall and Alumni Walk

LOCATION: Pittsburgh Carrick High School; 125 Parkfield Street, Pittsburgh, PA 15210

YEAR: May 30, 2003 (Carrick High School Alumni Walk)

GPS: N 40.391098 W 79.989806



All Wars Memorial honoring those of the 28th Ward

LOCATION: Steuben Street and Obey Street, at the intersection in front of Obey House; 1337 Steuben Street, Pittsburgh, PA 15205

GPS: N 40.442848 W 80.052599



Duquesne Incline Monument (VFW Post 5111 World War I, World War II, Vietnam, Korea)

LOCATION: Top of the Duquesne Incline at 1220 Grandview Avenue, Pittsburgh, PA 15211

GPS: N 40.438204 W 80.018926

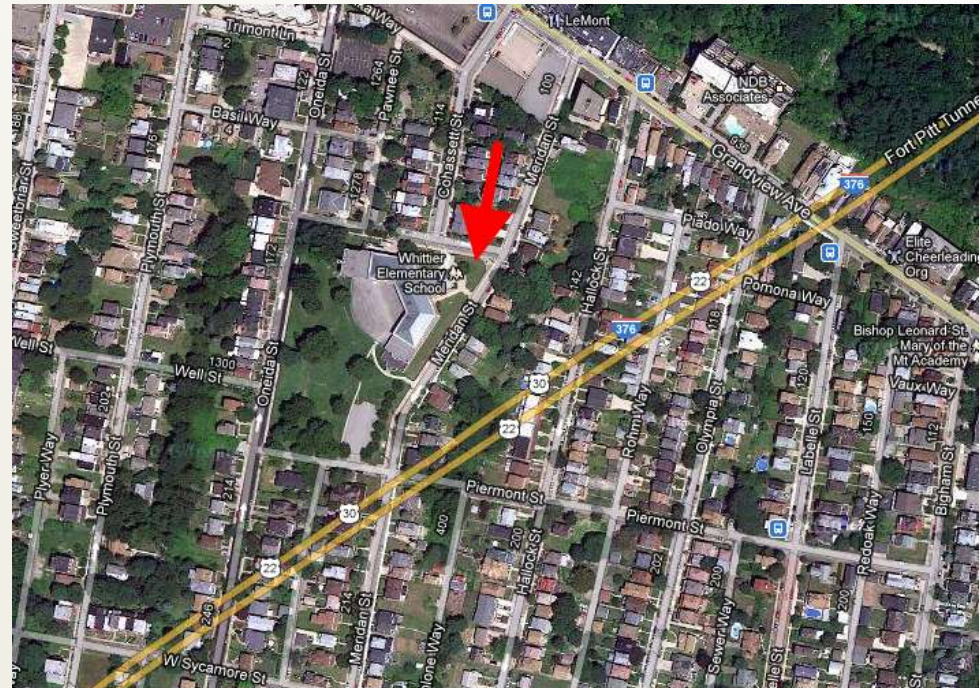


Veterans Honor Roll - 19th Ward

Veterans Honor Roll to commemorate those from this community who served in the World War 1914-1918

LOCATION: Meridan Street and Pawnee Street, in front of Whittier Elementary School

GPS: N 40.436236 W 80.018407



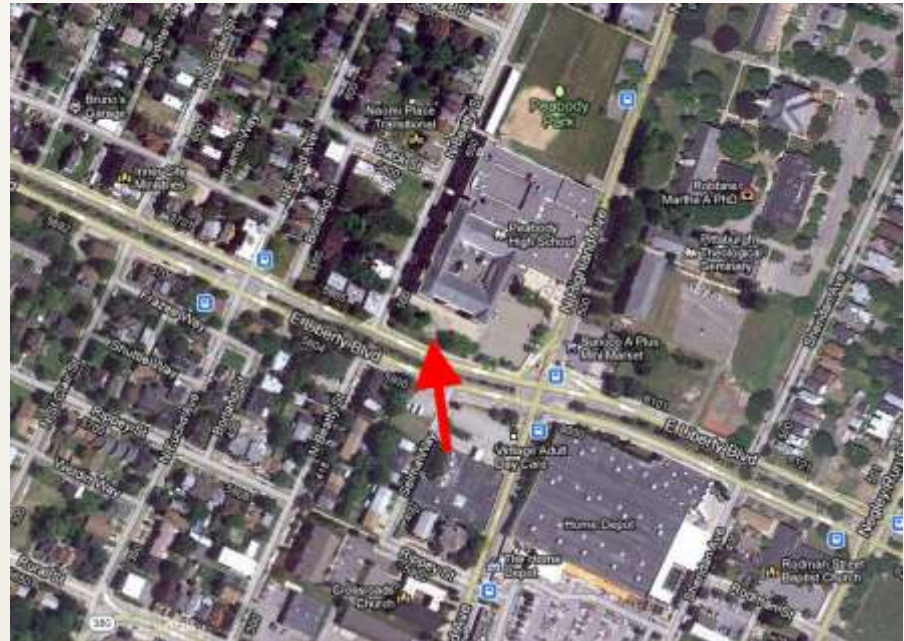
Peabody World War I Memorial Honor Roll

LOCATION: Peabody High School; Located on
E Liberty Boulevard side of building

YEAR: 1923

ARTIST: Frank Vittor (1888 – 1968)

GPS: N 40.466359 W 79.923705



Esplen Honor Roll

LOCATION: On Route 51 in front of Big Lots at the intersection of Route 51 (West Carson Street) and Stanhope Street

YEAR: May 30, 1995

GPS: N 40.464524 W 80.053481



Garfield Honor Rolls, All Wars

LOCATION: 5323 Penn Avenue, Pittsburgh, PA 15224; At St. Lawrence O'Toole Church on the corner of North Atlantic Avenue

GPS: N 40.464613 W 79.938449

Not verified



Saline Street Honor Roll - World War I and II, Vietnam, Korean War

LOCATION: Saline Street between Acorn
Street and Alexis Street, across
from Four Mile Run Park

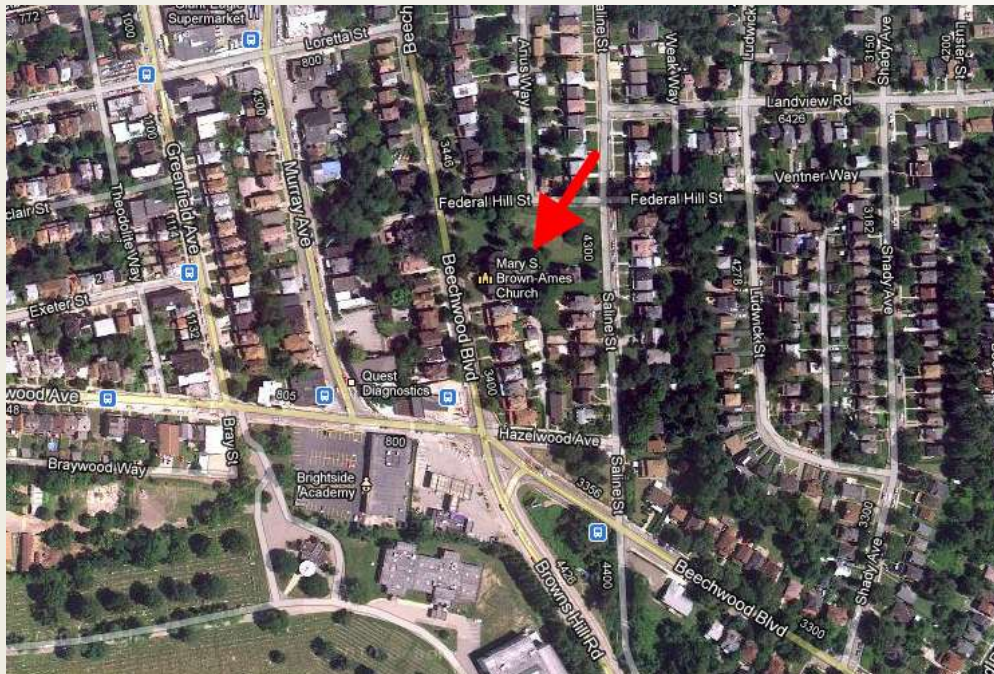
GPS: N 40.426745 W 79.94972



World War II Honor Roll 1941-1945

LOCATION: 3424 Beechwood Boulevard, Pittsburgh, PA 15217; Turner Graveyard, Mary S. Brown Memorial - Ames United Methodist Church

GPS: N 40.420455 W 79.927243



Monument plaque to Squirrel Hill residents who fought in the American Revolutionary War, the War of 1812, the Mexican War, and the Civil War

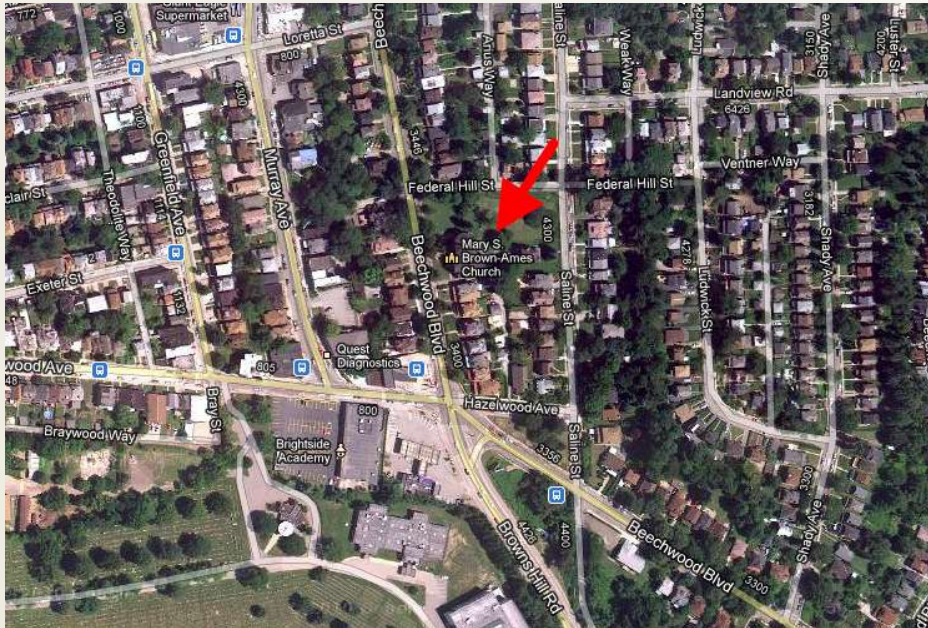
LOCATION: 3424 Beechwood Boulevard, Pittsburgh, PA 15217; Turner Graveyard, Mary S. Brown Memorial - Ames United Methodist Church

YEAR: 1908

SCULPTOR: George T. Brewster

FOUNDRY: Gorham Manufacturing Co.

GPS: N 40.420455 W 79.927243



Grand Army of the Republic Civil War Statue and Cannon

LOCATION: Calvary Cemetery;
718 Hazelwood Avenue, Pittsburgh, PA 15217

YEAR: 1904

GPS: N 40.414952 W 79.930456



War Service Honor Roll: World War II, Korea, Vietnam

LOCATION: On West Elizabeth Street in between Blair Street and Lytle Way, across from Chaplain Way (Next door to 303 West Elizabeth Street, Pittsburgh, PA 15207)

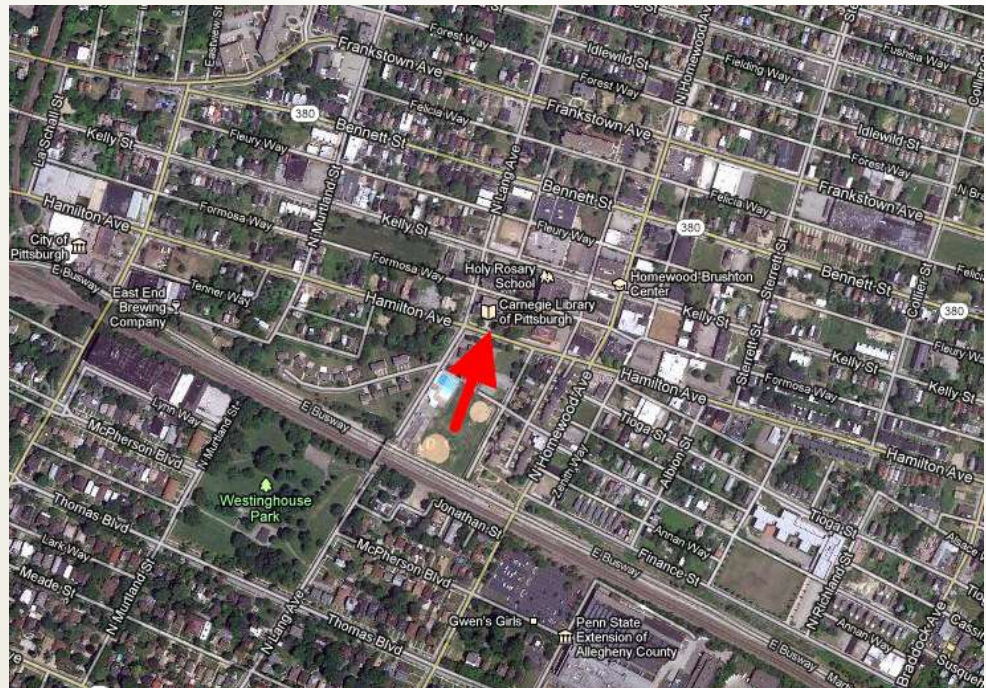
GPS: N 40.406761 W 79.94575



Brass plates under entrance of Carnegie Library

LOCATION: Carnegie Library; 7101
Hamilton Avenue, Pittsburgh, PA
15208

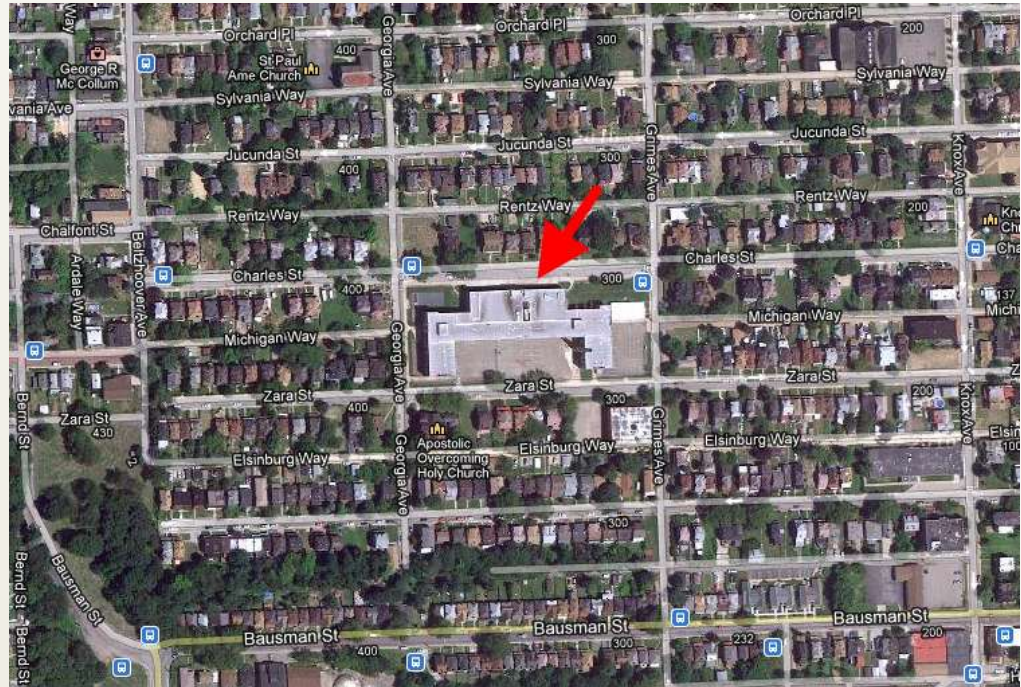
GPS: N 40.455242 W 79.89923



Knoxville World War I Memorial

LOCATION: At the main entrance of the former junior high school on Charles Street, between the blocks of Georgia Avenue and Grimes Avenue; Located on the building wall on the left side of the main door

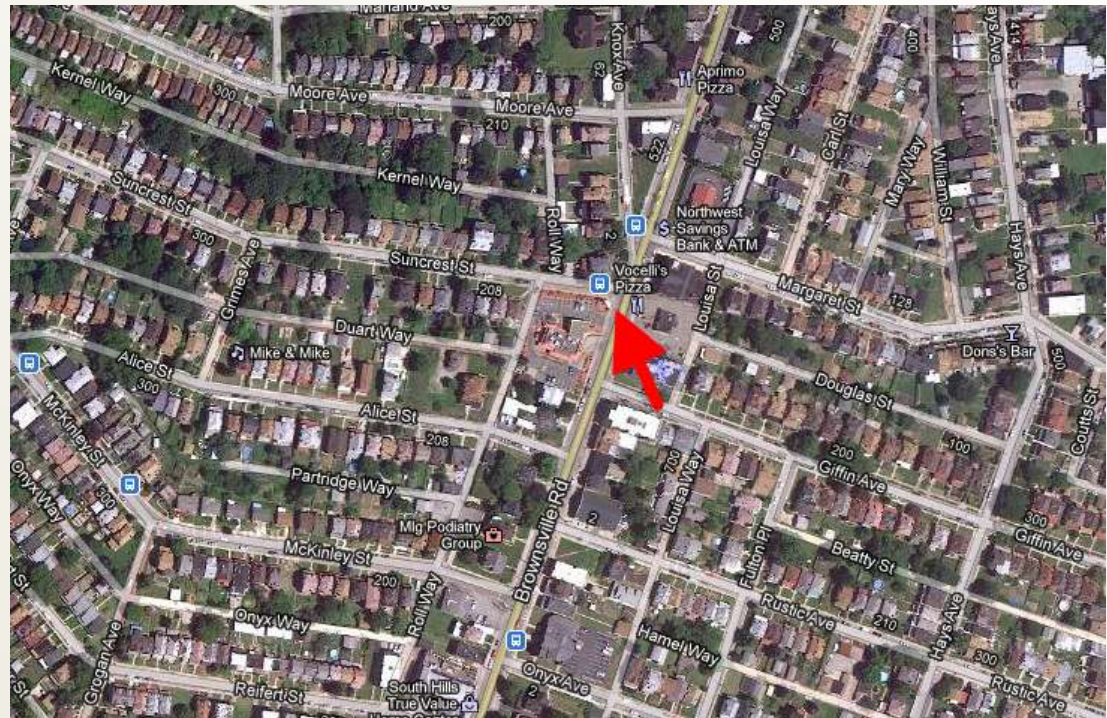
GPS: N 40.416374 W 79.994153



30th Ward Knoxville War Service Honor Roll

LOCATION: Intersection of Brownsville Road and Suncrest Street, in front of the McDonald's

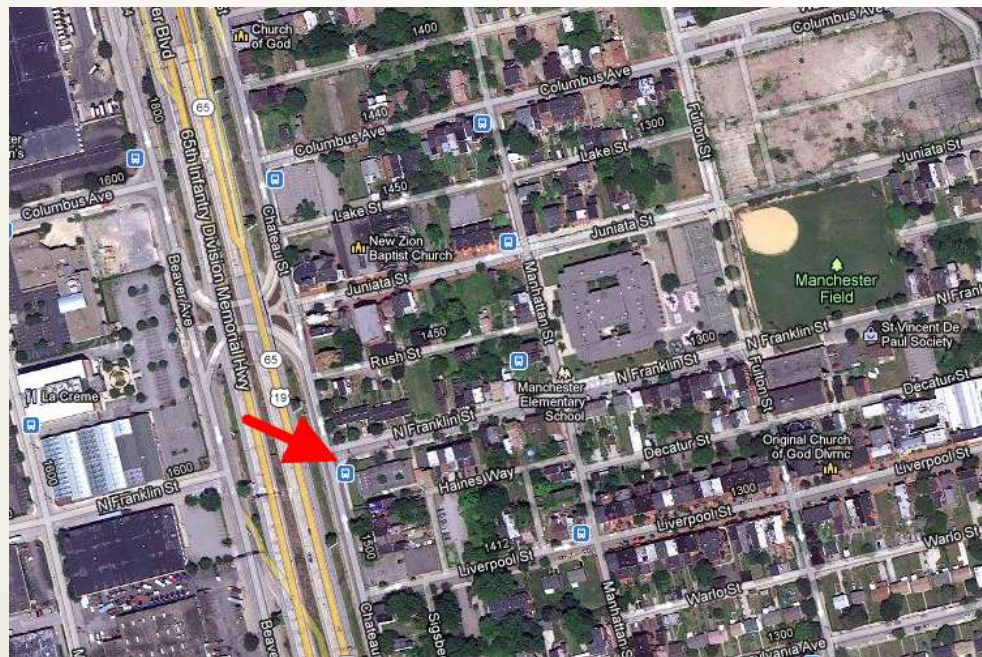
GPS: N 40.410359 W 79.990488



21st Ward Plaque

LOCATION: Chateau Street and North Franklin Street

GPS: N 40.455454 W 80.02871



All Wars Memorial

LOCATION: 1820 Morningside Avenue,
Pittsburgh, PA 15206; VFW Post
#3945, between Greenwood
Street and Gael Way

YEAR: 1994

GPS: N 40.486914 W 79.926472



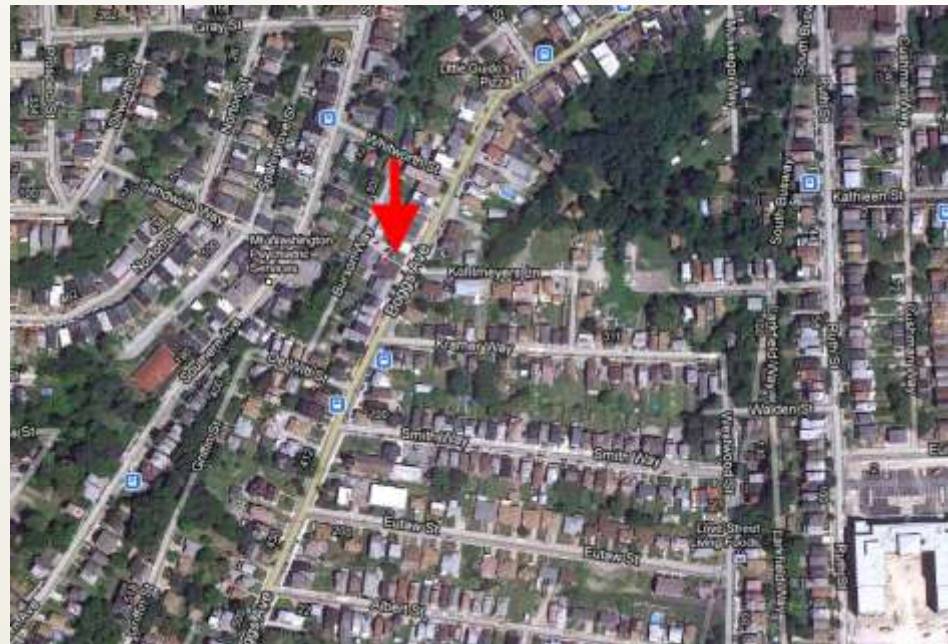
19th Ward War Service Honor Roll (Korean, Vietnam Veterans)

Re-dedicated to all who served our country, remembrance to the Korean and Vietnam veterans, P.O.W.'s and M.I.A.'s

LOCATION: Boggs Avenue at Kohlmeys Lane, north of Kramer Way

YEAR: 1929, re-dedicated 1984

GPS: N 40.425095 W 80.008752



Residents of Chatham Village, World War II

LOCATION: Above tennis courts on Penrridge Road,
past the Penrridge Road and Bigham Road
intersection

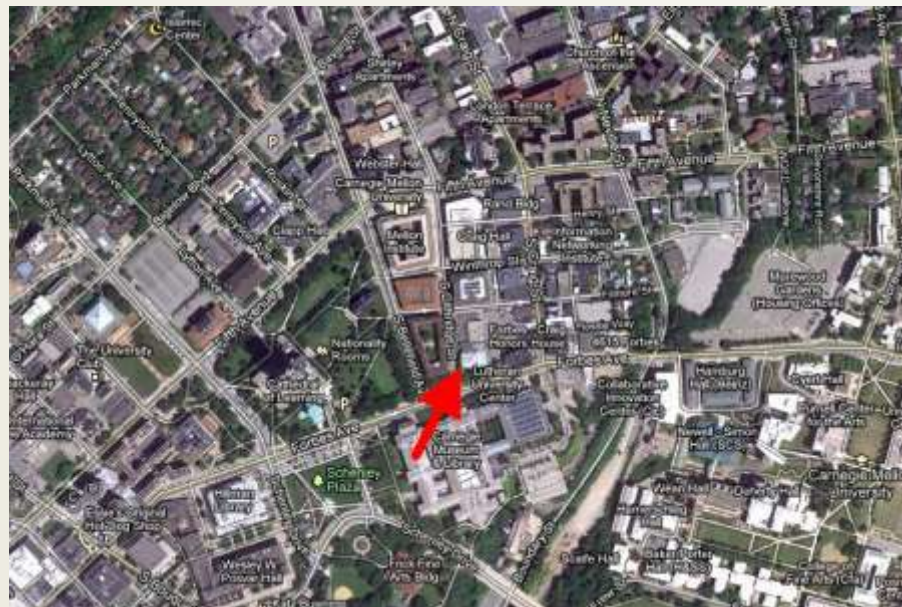
GPS: N 40.429368 W 80.016566



Veteran Honor Roll

LOCATION: 419 South Dithridge Street,
Pittsburgh PA 15213; Saint Nicholas
Greek Orthodox Cathedral, on the
corner of South Dithridge and Forbes
Avenue

GPS: N 40.444371 W 79.950138



Pittsburgh Blues War of 1812 Memorial Sundial

LOCATION: 4301 Forbes Avenue, Pittsburgh, PA 15213 (Adjacent to the Southwest corner of the Stephen Foster Memorial); If facing Stephen Foster Memorial from Forbes avenue entrance to building, the Sundial is off of the left path around the building.

GPS: N 40.443518 W 79.952703



Immaculate Heart of Mary World War II Monument

LOCATION: On Brereton Street in front of Immaculate Heart of Mary Church

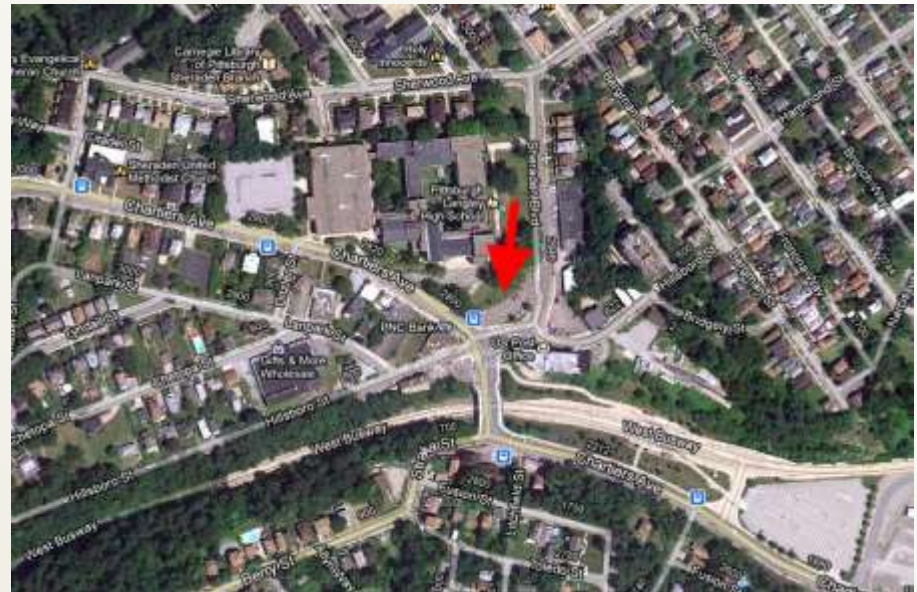
GPS: N 40.456542 W 79.967813



World War I Memorial

LOCATION: In front of Langley High School,
Sheraden Blvd and Hillsboro Street

GPS: N 40.453589 W 80.054423

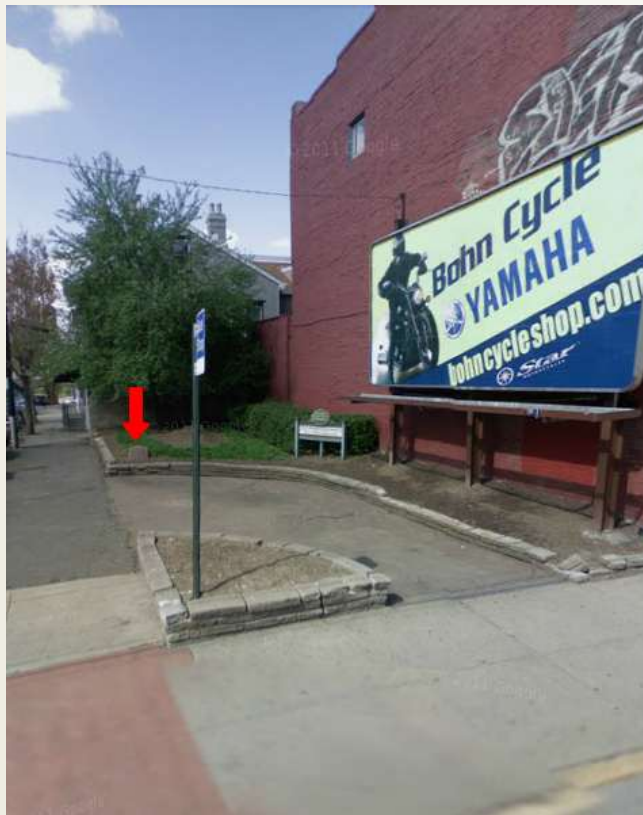


Charles P. Samaha

LOCATION: Carson Street and 11th Street

YEAR: 1932

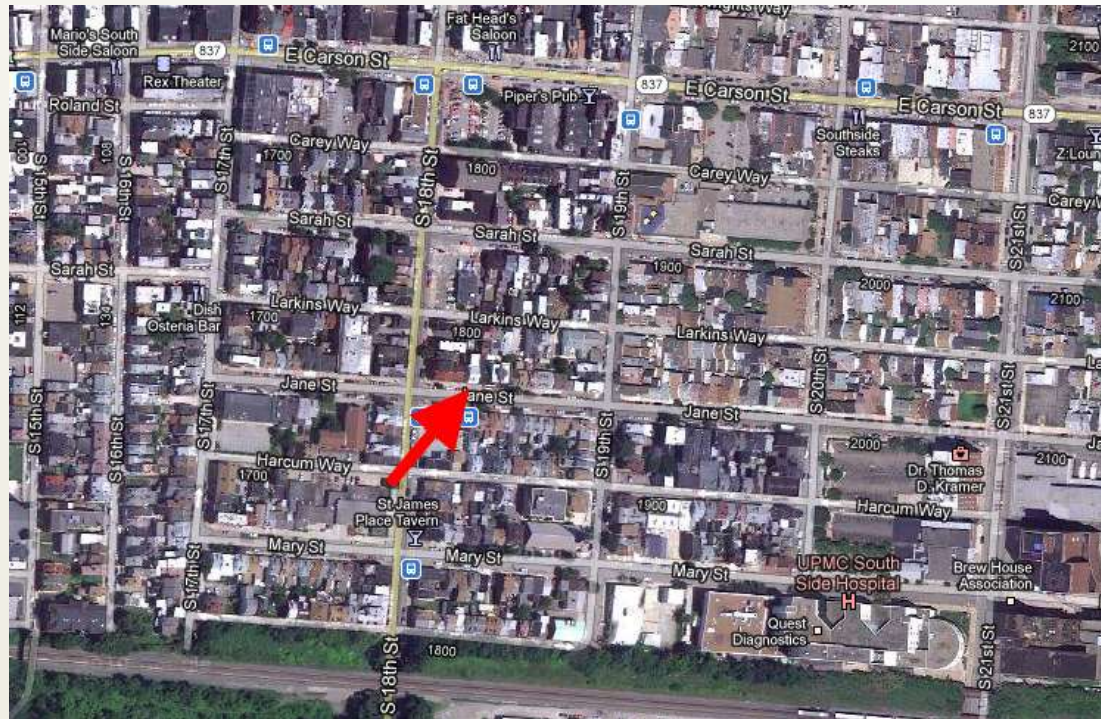
GPS: N 40.428898 W 79.987381



Polish Veterans Memorial

LOCATION: 1807 Jane Street, Pittsburgh, PA
15203

GPS: N 40.427022 W 79.980297

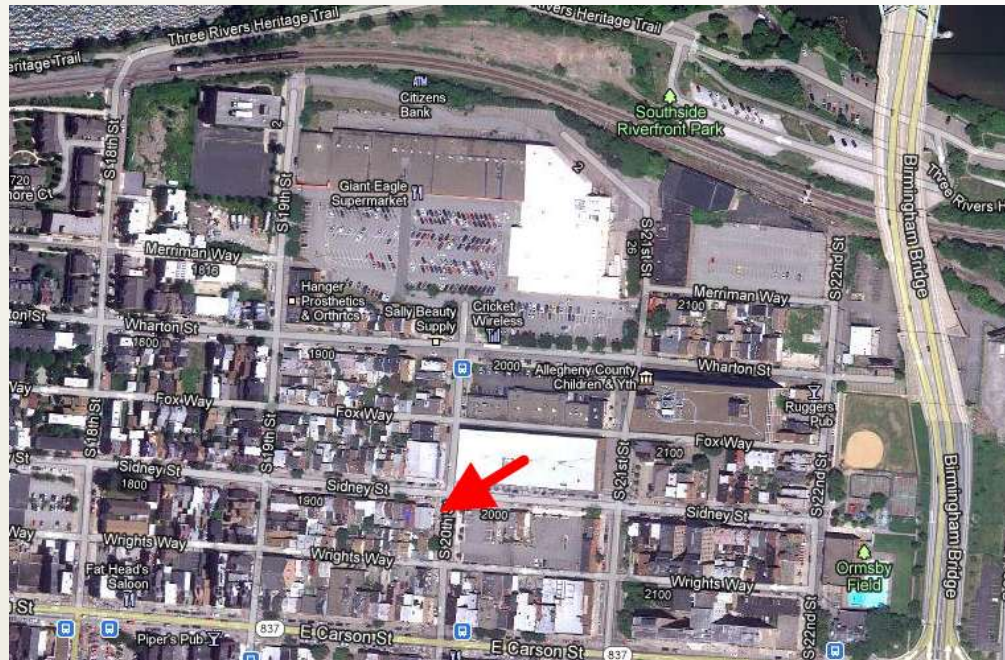


Southside VFW War Memorial, 1981

LOCATION: 64 South 20th Street at the VFW
Post 6675

YEAR: 1981

GPS: N 40.429397 W 79.97765

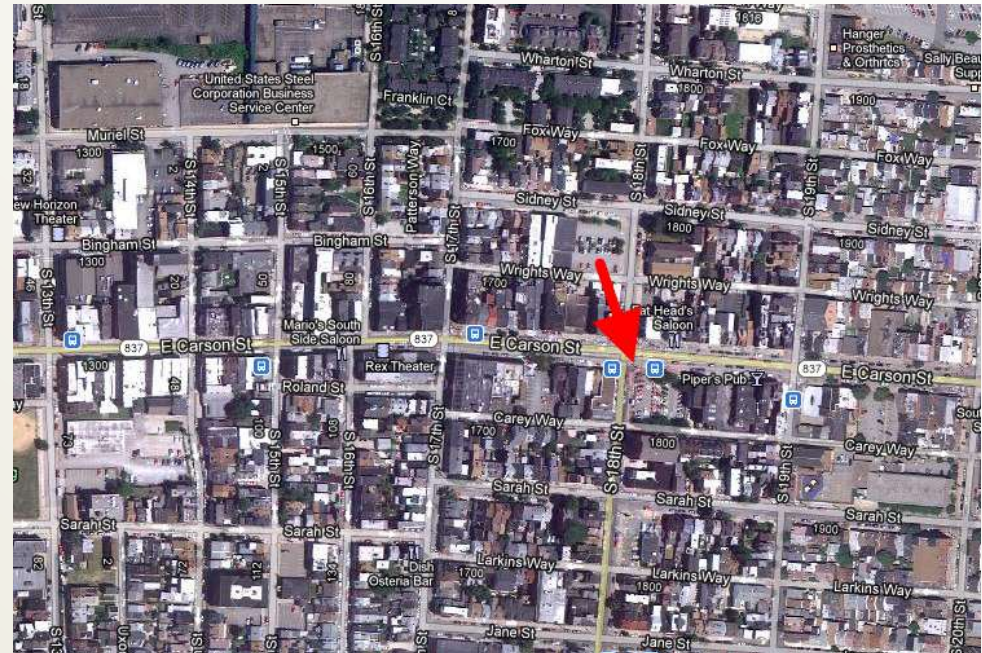


Veterans Memorial, 1995, 17th Ward

LOCATION: 18th Street and Carson Street

YEAR: 1995

GPS: N 40.428647 W 79.980474



Honor Roll

LOCATION: Turn south off of S. 18th onto Quarry Street, continue to steps and go down to base

GPS: N 40.420753 W 79.984809



Saint Josaphat Honor Roll

War Memorial in honor of the men and women of St. Josaphat Church who served our country in World War I and II (1917-1918; 1941-1945)

LOCATION: Mission Street across from St. Josaphat's Church

FABRICATOR: Donatelli Monuments

GPS: N 40.423121 W 79.973398

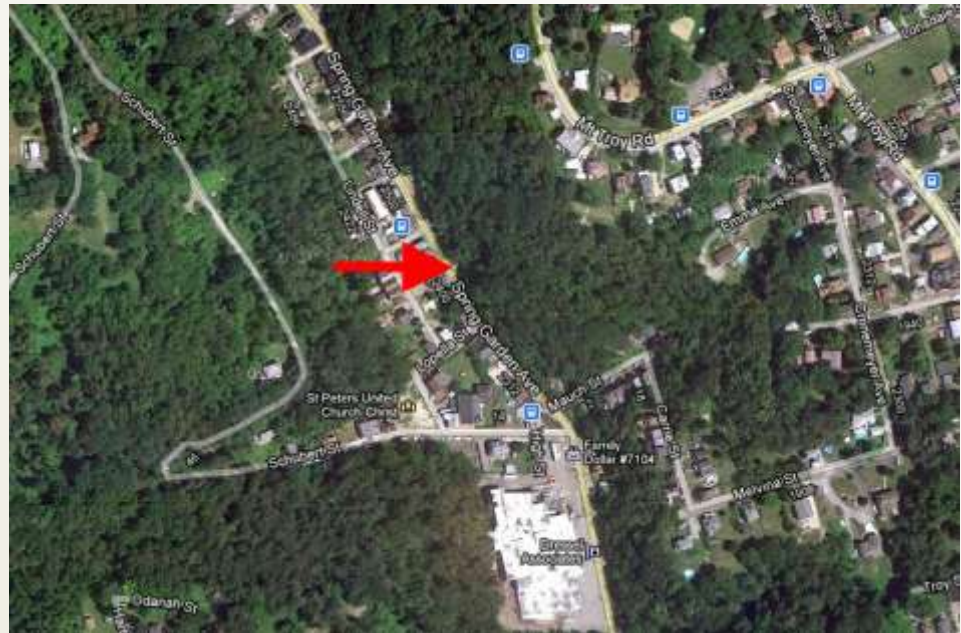


Verify in field

World War II Memorial

LOCATION: Spring Garden Avenue,
Pittsburgh, PA 15212 (500 ft. North
of Mauch Street on East Side of
road)

GPS: N 40.472555 W 79.98729



Veterans Honor Roll - 19th Ward, World War II

LOCATION: 1050 Windermere Drive, Pittsburgh, PA 15218; On both the right and left exterior wall of entrance to the Sarah Jackson Black Community Center (Swisshelm Park Community Center)

GPS: N 40.424363 W 79.901114



Western Pennsylvania Firefighters Memorial

LOCATION: Voegtly Cemetery, facing
Lowrie Street

DESIGNED BY: Kenneth A Bacha
Memorial Designs, Inc

GPS: N 40.467234 W 79.979987





North Shore War Monuments

*The Sports and Exhibition
Authority's property*



PITTSBURGH
A MOST LIVABLE CITY

Korean War Veterans' Memorial

LOCATION: 100 North Shore Drive, Pittsburgh, PA 15212; Off of Three Rivers Heritage Trail System - North Shore Trail, along the Allegheny River, near Mazeroski Way

YEAR: 1999

GPS: N 40.445641 W 80.00805



Law Enforcement Memorial

LOCATION: Adjacent to Mr. Rogers sculpture, across from Heinz Field, by intersection of Art Rooney Avenue and North Shore Drive

YEAR: 1996

GPS: N 40.445134 W 80.013707



Vietnam Veteran's Monument

LOCATION: North Shore Riverfront Park, between PNC Park and Heinz Field, adjacent to Fort Duquesne Bridge on Allegheny River's edge

YEAR: 1987

ARTIST: Ron Bennet

SCULPTOR: George Danhires (b. 1942)

LANDSCAPE ARCHITECTS: Edward Dumont, John Robert Middleton

GPS: N 40.445156 W 80.010819



Southwestern Pennsylvania World War II Memorial

LOCATION: North Shore Riverfront Park, between Heinz Field and the Delmonte Center

YEAR: 2013

ARTIST: Larry Kirkland

GPS: N 40.445480, W 80.011970





War Monuments on County of Allegheny Property



PITTSBURGH
A MOST LIVABLE CITY

Parade Rest and Lookout, 1923

LOCATION: Soldiers and Sailors Memorial Hall
Main entrance, Fifth Avenue & Bigelow
Boulevard

YEAR: 1923

ARTIST: Frederick Cleveland Hibbard (1881 - 1950)

GPS: N 40.445053 W 79.956436



Jack's Run Bridge Memorial Columns (4), WWI

LOCATION: Jack's Run Bridge at California Avenue and Winhurst Street (the bridge over Farragut Avenue - going into Bellevue)

YEAR: 1925

GPS: N 40.48735 W 80.045078





**War Monuments
not within
the City of
Pittsburgh's limits**



PITTSBURGH
A MOST LIVABLE CITY

All Wars Monument

LOCATION: Chartiers Avenue and Route 51,
at the intersection of Chartiers
Avenue, Furnace Street, and Linden
Avenue

YEAR: October 19, 1969

GPS: N 40.46456 W 80.057966





Unable to Locate



PITTSBURGH
A MOST LIVABLE CITY

Charles E. Kelly, World War II

LOCATION: West Park

YEAR: 1988

ARTIST:

SOURCE: DPW file only

GPS: ** Unable to locate**

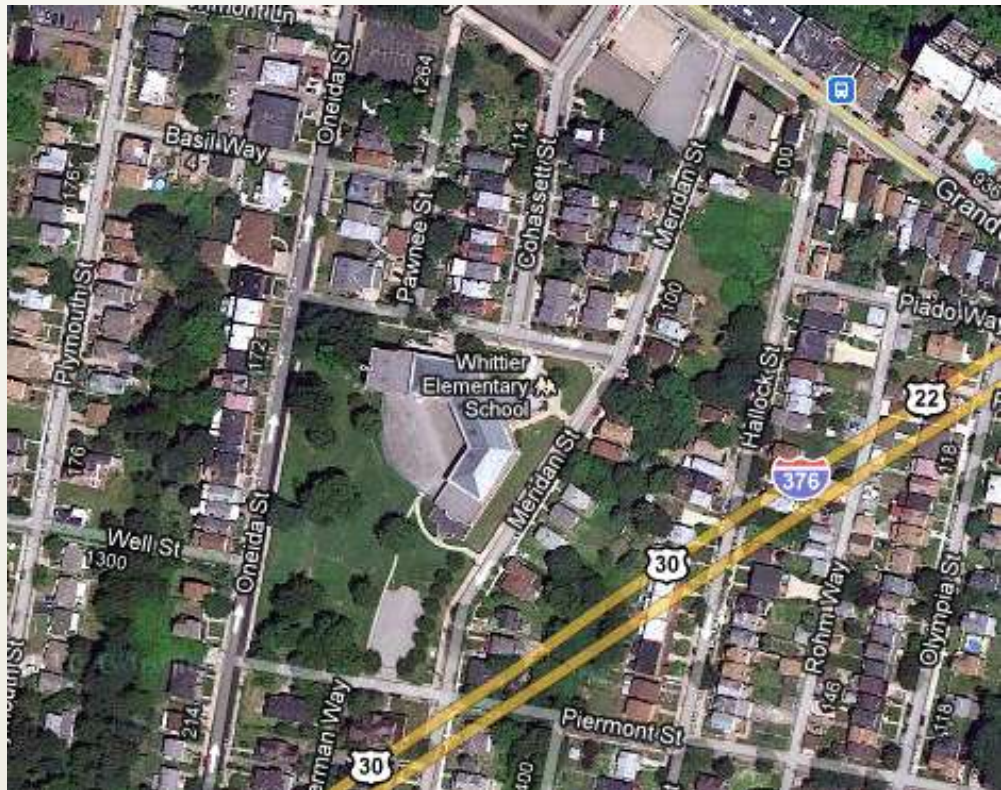


World War I Memorial

LOCATION: On the side of Whittier Elementary School at Cohasset Street

GPS: N 40.436342 W 80.018816

No Photo Available



Unknown Memorial

FORMER LOCATION: Four Mile Run

GPS: N 40.427627 W 79.948025

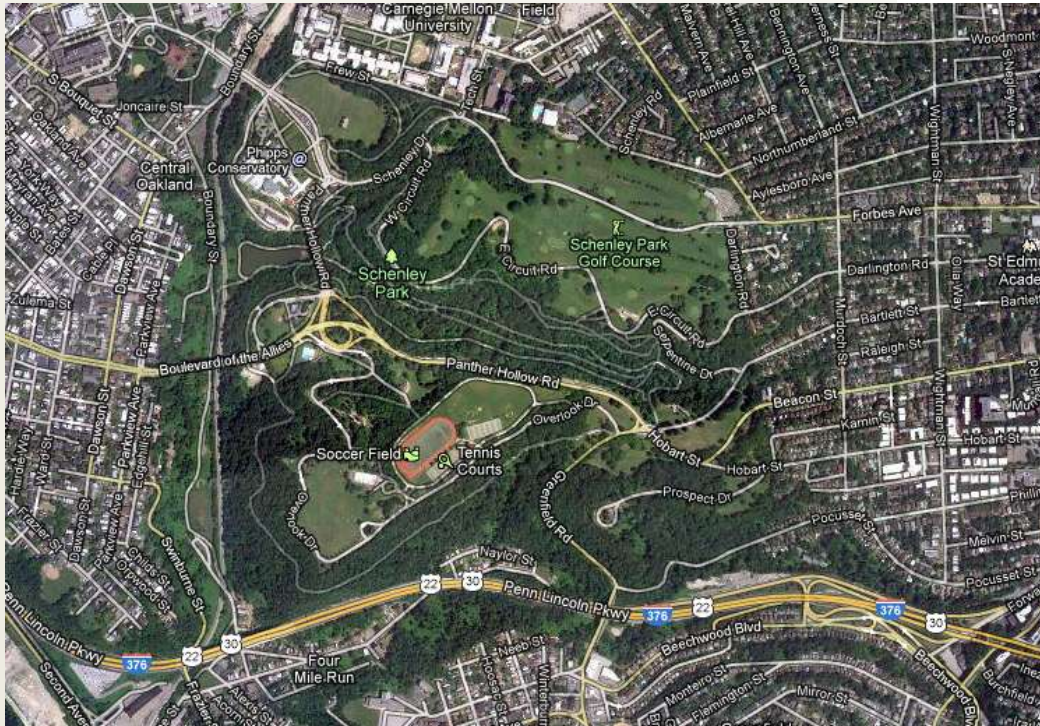
CURRENT LOCATION: Unknown



World War I Memorial Grove

LOCATION: Schenley Park; West Court Drive,
above Westinghouse Pond

GPS: N 40.433621 W 79.943883



Honor Roll (Bronze and Stone)

LOCATION: Mccandless Street just up from the 4400 block of Stanton Avenue (doesn't match her map, also is this in someone's yard???)

YEAR:

ARTIST:

SOURCE: Eileen Stewart

EMAIL: pa_yankee2010@yahoo.com

PHONE: (817) 560-8116

GPS: ****Unable to locate****



Clarion Call
(DESTROYED - stolen for
scrap)

FORMER LOCATION: Frank Curto Park;
Bigelow Boulevard

ARTIST: H. Douglas Pickering

SOURCE: DPW file only

GPS: N 40.451682 W 79.978409



STRIP DISTRICT

Artwork Stolen, Scrapped

October 27, 1986 | The Morning Call

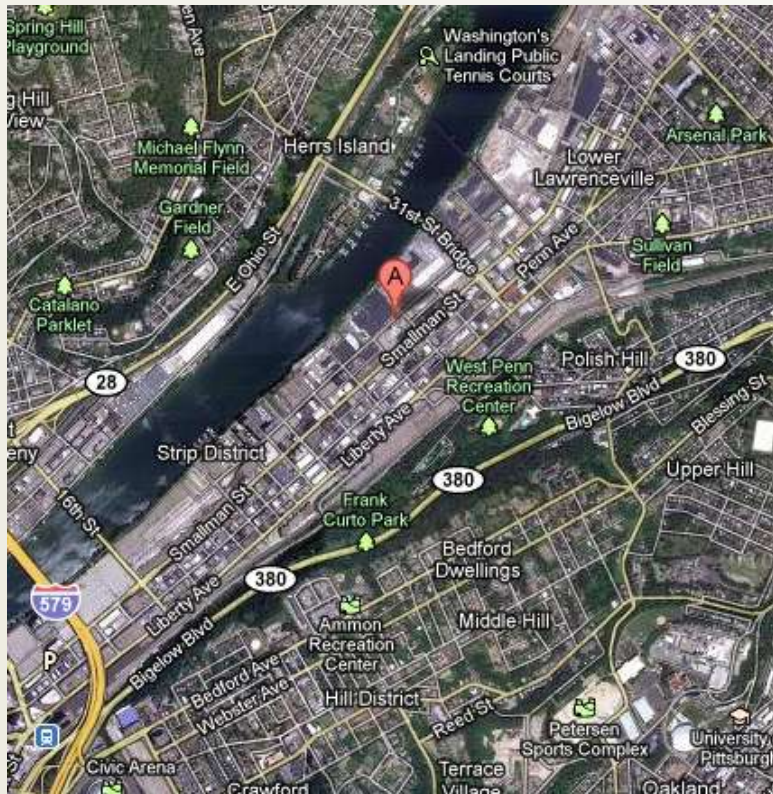
This 800-pound aluminum sculpture was stolen recently in Pittsburgh and sold by the thieves to a scrap dealer for \$35. The work is by H. Douglas Pickering, who has titled it 'Clarion Call.' Pickering values the work at \$66,000.

World War II Honor Roll (DESTROYED)

FORMER LOCATION: Railroad Street (near 29th?)
NO LONGER EXISTS

YEAR: 1943

GPS: N 40.458948 W 79.976285



DT-38. World War II Honor Roll, c. 1943.



Version 4.0

Published November 6, 2014

To gain or to send more information please contact:

Morton Brown

Public Art Manager, Department of City Planning

morton.brown@pittsburghpa.gov

412-255-8996

www.pittsburghpa.gov/dcp/warmonuments/



PITTSBURGH
A MOST LIVABLE CITY