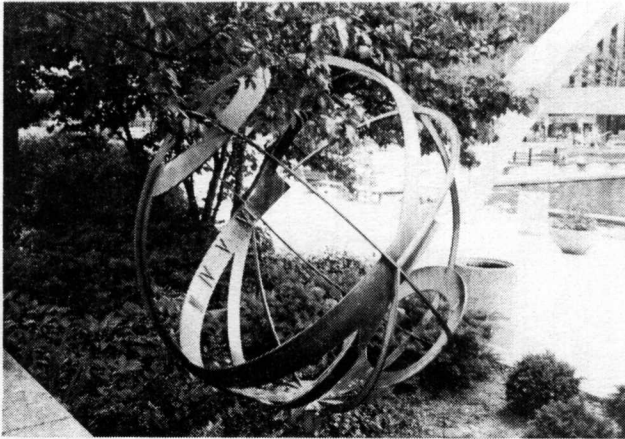


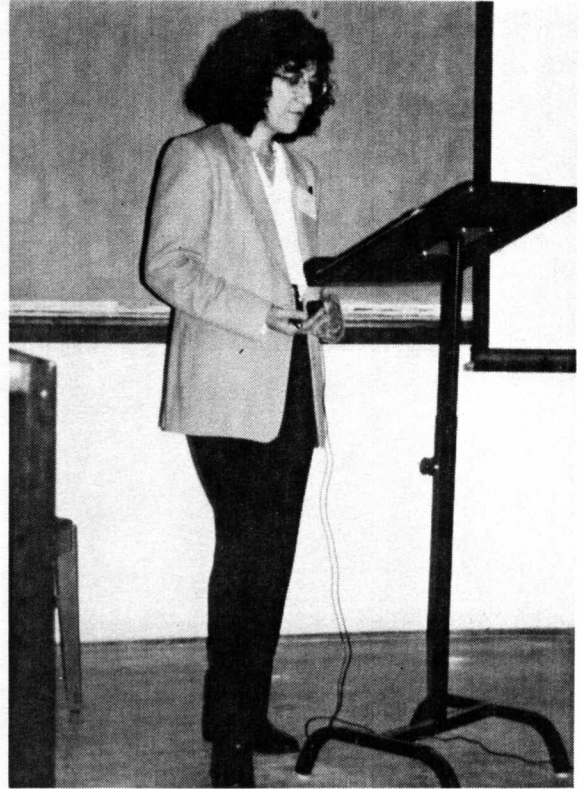
Concrete Dial at Pearson Airport.



Armillary sphere in Nathan Phillips Square  
in front of City Hall



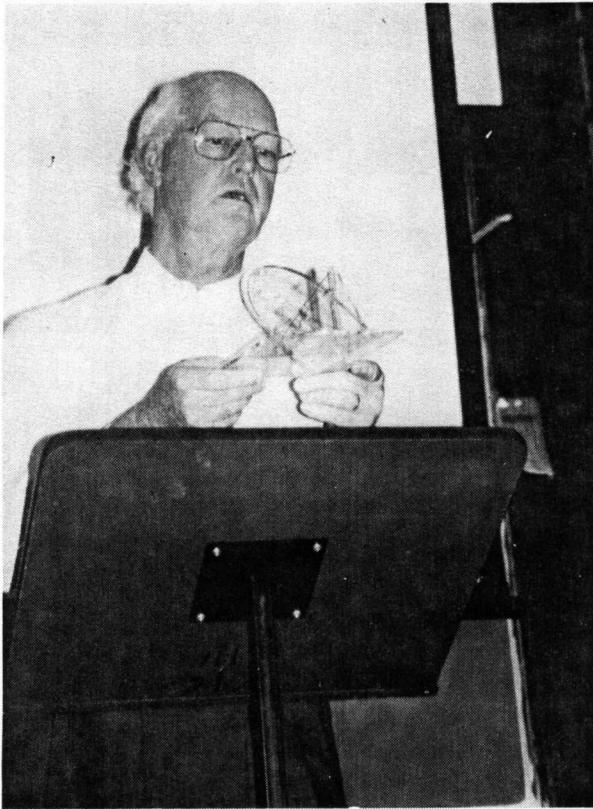
Fred Sawyer & contest winners George  
McDowell, Ken Clark & Harold Brandmaier.



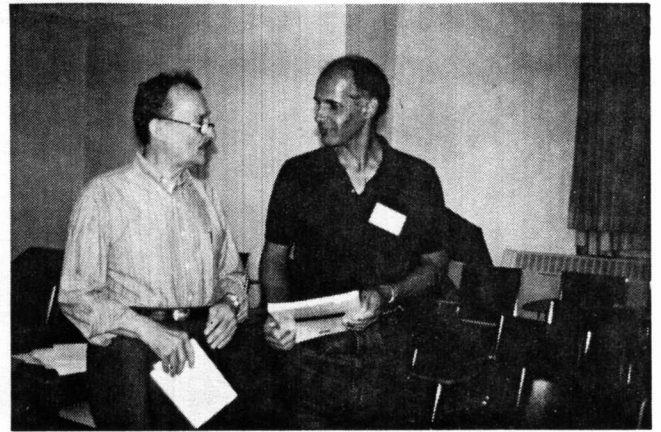
Sara Schechner Genuth on historical dials  
as evidence of consumer culture.



Memorial dial at Victoria College.



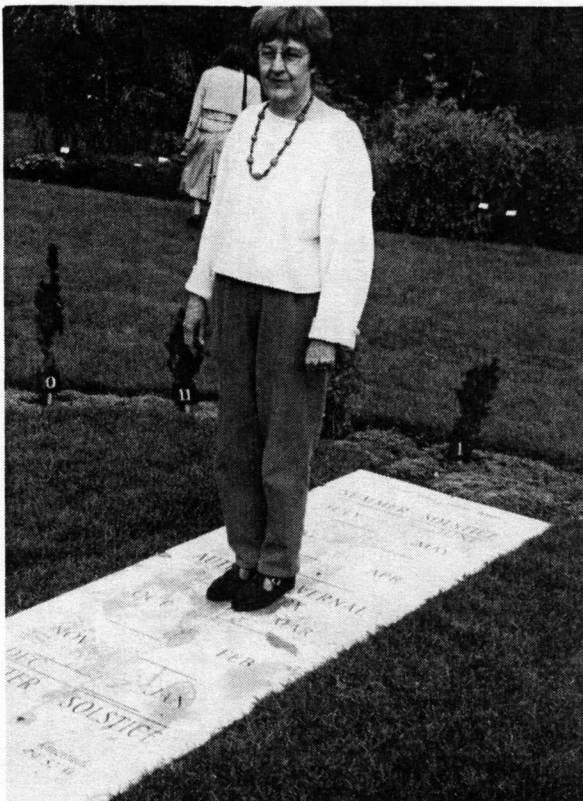
Don Petrie explains his teaching model.



Harold Brandmaier & Louis Wint



Bill Buckler demonstrates his analemmic gnomon on an equatorial dial.

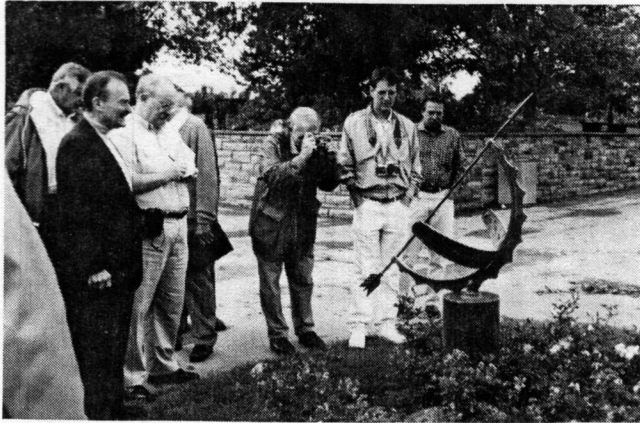


Ginny Brandmaier trying Paul Lapp's analemmatic dial.

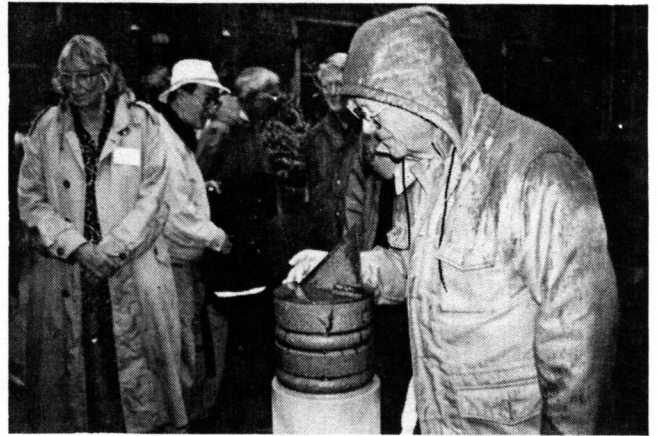


Warren Thom & Claude Hartman





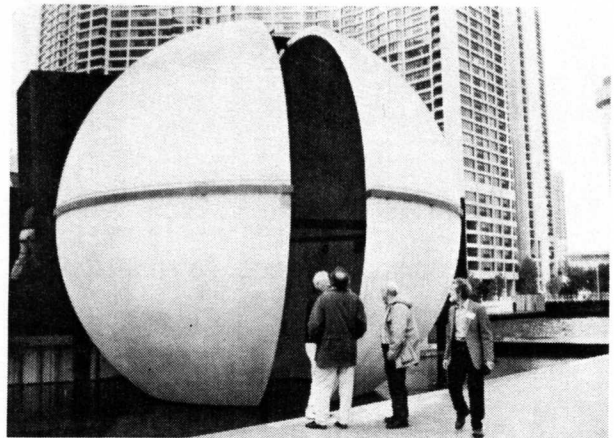
Taking stock of a dial at the Royal Botanic Gardens



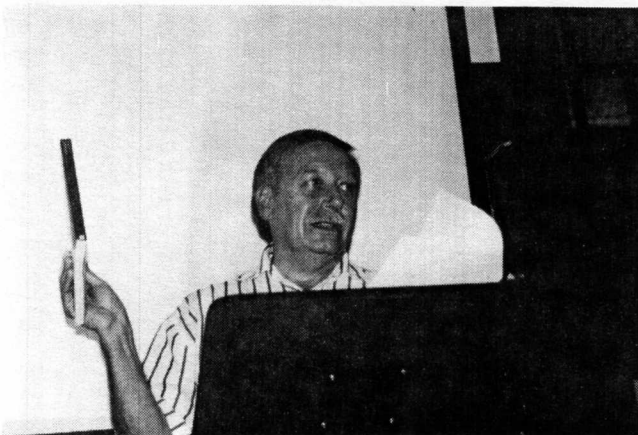
Tom Shepard examining the Hart House dial.



Jean Shepard & Phil Sawyer at Paul & Jan Lapp's home.



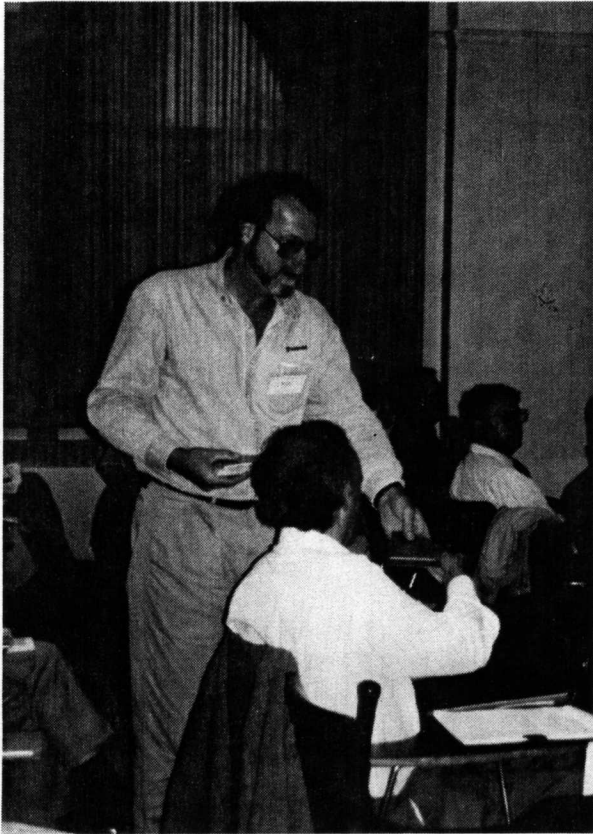
Sculptural meridian marker at York Quay.



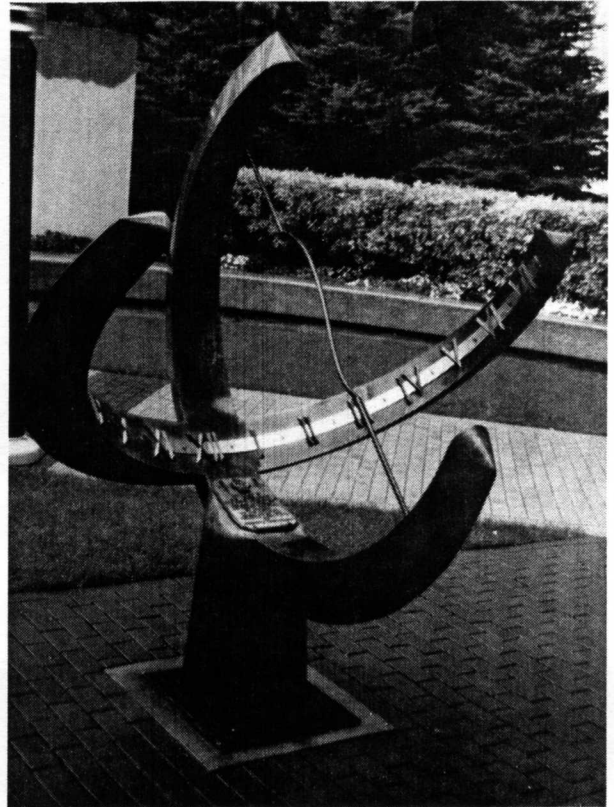
André Bouchard on activities in Quebec.



Dinner at the U. Toronto Faculty Club



Ron Anthony distributes astroid dials.



Dial with analemmatic gnomon at the Michener Institute of Medical Technology

